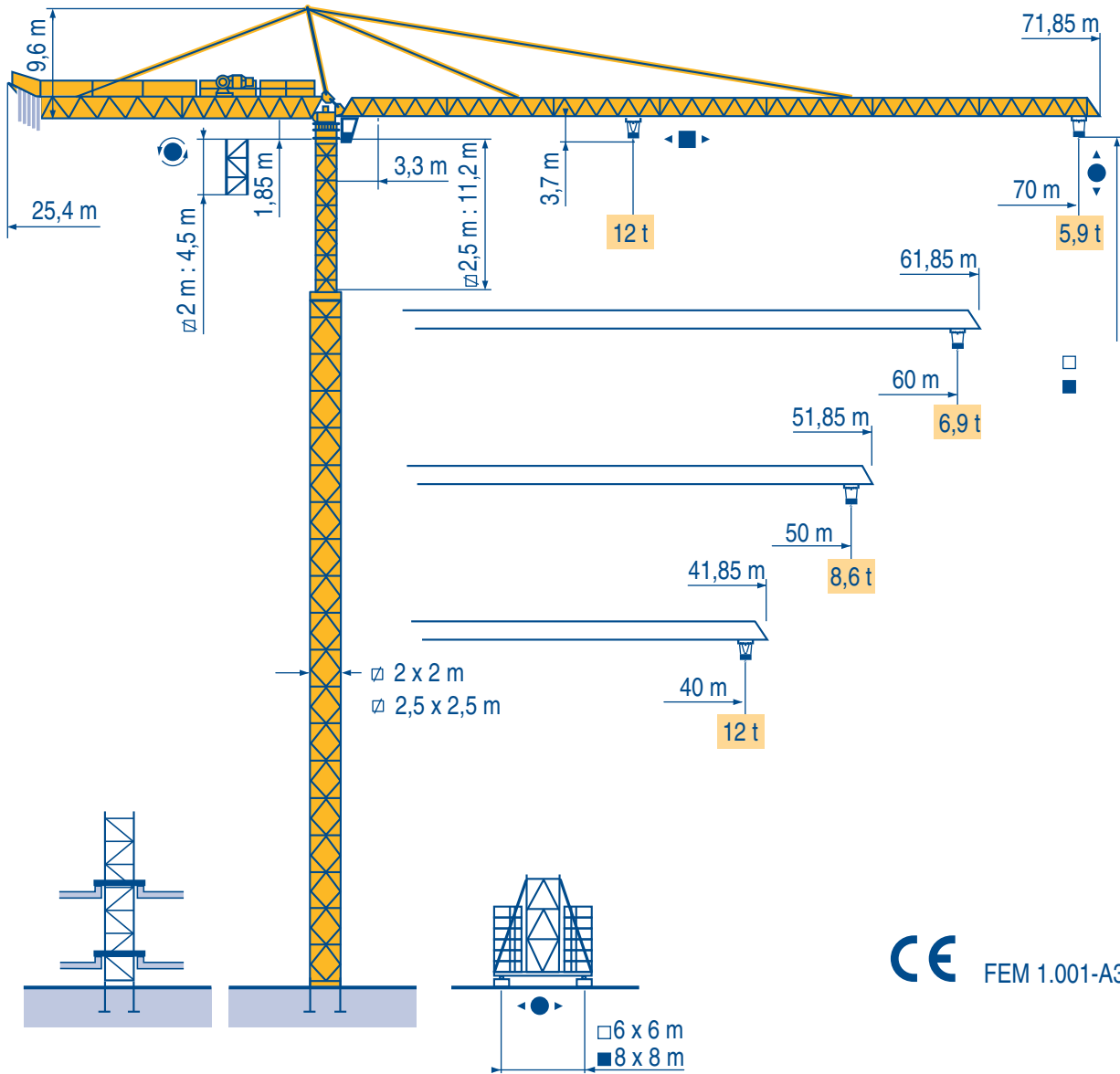


TOPKIT K3/59 C



CE FEM 1.001-A3

LMX 1

Igo
HD
HDM



HDT



GTMR



CITY CRANE



TOPKIT MD
MAXI MD



MAXI TOPKIT



Topless MDT

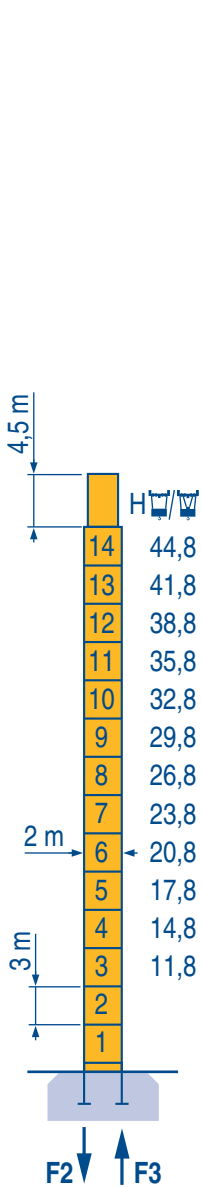


MR



2 m x 2 m

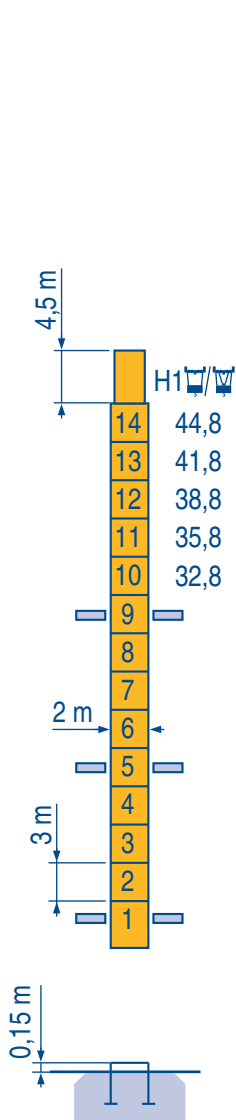
2,5 m x 2,5 m



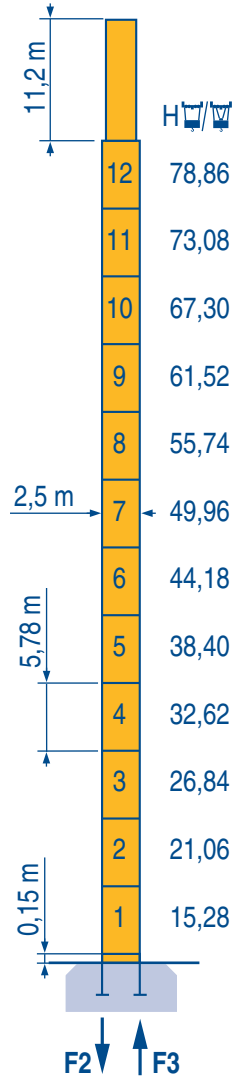
PA 690

F2 ● 175 t ■ 128 t
F3 ● 117 t ■ 76 t

95 t



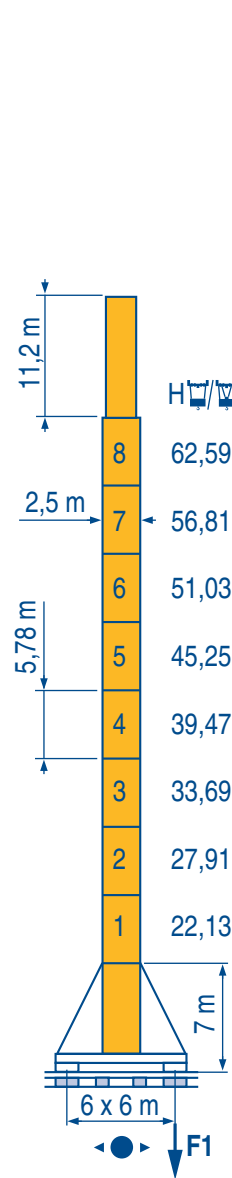
BA 68A



PA 852

F2 ● 195 t ■ 197 t
F3 ● 126 t ■ 134 t

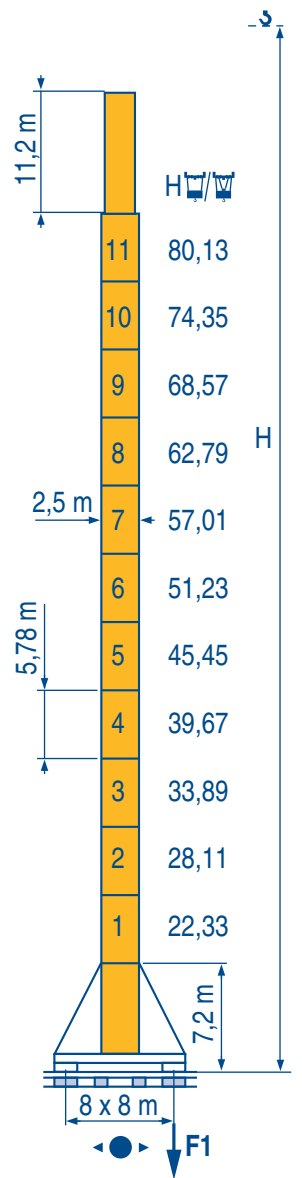
110 t



XA 850

F1 ● 118 t ■ 94 t

115 t



YA 851

F1 ● 107 t ■ 108 t

130 t

LMX 1

● Voir télescopage sur dalles
● Réactions en service
■ Réactions hors service
👤 A vide sans lest (ni train de transport) avec flèche et hauteur maximum.

F

See climbing crane
Reactions in service
Reactions out of service
Without load, ballast (or transport axles), with maximum jib and maximum height.

GB

Consultare gru in cavedio
Reazioni in servizio
Reazioni fuori servizio
A vuoto, senza zavorra (ne assali di trasporto) con braccio massimo e altezza massima.

I

● Siehe Kletterkrane im Gebäude
● Reaktionskräfte in Betrieb
■ Reaktionskräfte außer Betrieb
👤 Ohne Last, Ballast (und Transportachse), mit Maximalausleger und Maximalhöhe.

D

Veja grua trepadora
Reacciones en servicio
Reacciones fuera de servicio
Sin carga, sin lastre, (ni tren de transporte), flecha y altura máxima.

E

见楼板顶升
工作状况下的反应
非工作状况下的反应
空载无压重也无运输车
有吊臂和最大高度

C

Courbes de charges
Lastkurven



Load diagrams
Curvas de cargas



Curve di carico
负荷曲线



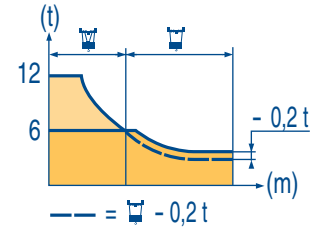
70 m	3,3	▶	37,2	40	43	45	47	50	53	55	57	60	63	65	67	69	70 m
			12	11,1	10,2	9,7	9,2	8,6	8	7,6	7,3	6,9	6,5	6,2	6	6	5,9 t

60 m	3,3	▶	37,2	40	43	45	47	50	53	55	57	60 m
			12	11,1	10,2	9,7	9,2	8,6	8	7,6	7,3	6,9 t

50 m	3,3	▶	37,2	40	43	45	47	50 m
			12	11,1	10,2	9,7	9,2	8,6 t

40 m	3,3	▶	40 m
			12 t

LMX1



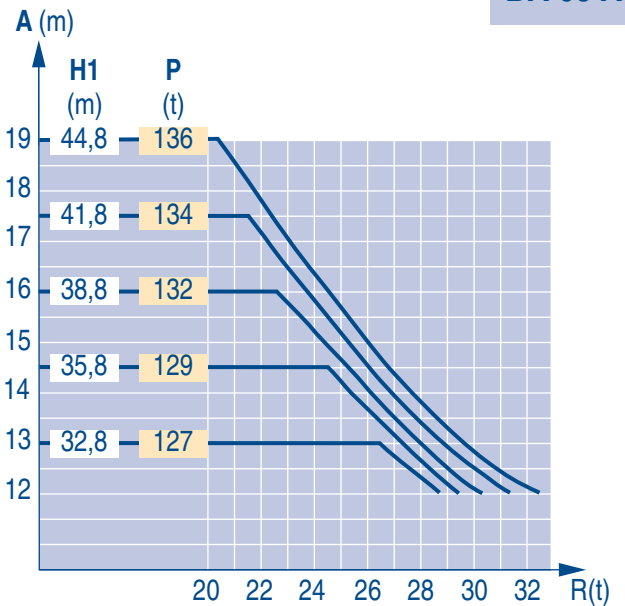
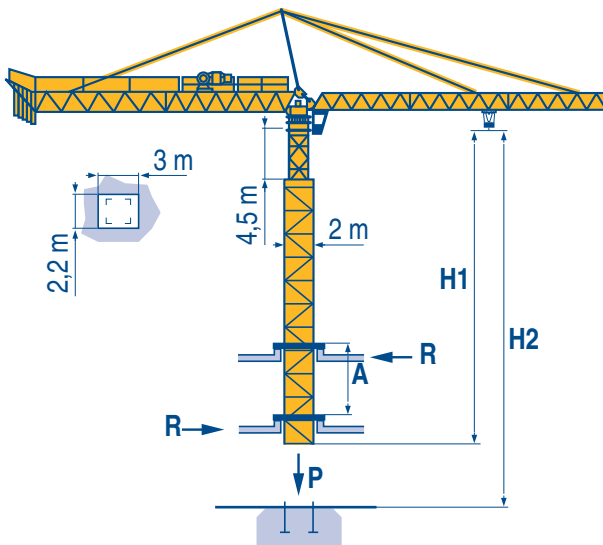
Télescopage sur dalles
Kletterkrane im Gebäude



Climbing crane
Telescopage gruas trepadoras



Gru in cavedio
楼板上顶升



H2	55 RCS		70 RCS 30		120 LMD 30S	
	🏗️	🏗️	🏗️	🏗️	🏗️	🏗️
183 m	92 m	282 m	141 m	300 m	150 m	

LMX1

A Distance entre cadres
H1 Hauteur grue
P Poids de la grue (en service)
R Réaction horizontale



Distance between collars
Crane height
Crane weight (in service)
Horizontal reaction



Distanza fra i telai
Altezza gru
Peso della gru (in servizio)
Reazione orizzontale



A Abstand zwischen den Rahmen
H1 Kranhöhe
P Krangewicht (in Betrieb)
R Horizontalkräfte
















Distancia entra marcos
Altura grúa
Peso de la grúa (en servicio)
Reaccion horizontal





















各附着框之间距离
工作状态下塔机高度
工作状态下塔机重量
水平反力



								ch - PS hp	kW		
	55 RCS 30	m/min	0 → 34	0 → 68	-	0 → 17	0 → 34	-	55	40,5	365 m > 365 
		t	6	3	-	12	6	-			
	70 RCS 30	m/min	0 → 40	0 → 80	-	0 → 20	0 → 40	-	70	51	565 m > 565 
		t	6	3	-	12	6	-			
	150 LCC 30	m/min	86 → 103 → 129 → 172 → 206			43 → 52 → 65 → 86 → 103			150	110	652 m > 652 
		t	6	4,5	3	1,5	0,75	12			
	15 DRC 8	m/min	0 - 4 → 43 - 86						14	10,3	
	RTV	tr/min U/min rpm	0 → 0,7						2 x 12	2 x 9	
 R ≥ 20 m	XA RT 664 A2B - 2V	m/min	16 - 32						6 x 7	6 x 5,2	
	TCV 669 ARC H ≤ 39,4 m	m/min	10 - 50						6 x 6,8	6 x 5	
 R ≥ 32 m	YA RT 664 A2B - 2V	m/min	16 - 32						6 x 7	6 x 5,2	

CEI 38 	IEC 38	kVA	
400 V (+6% -10%) 50 Hz		55 RCS 30 : 90 kVA 70 RCS 30 : 110 kVA 150 LCC 30 : 190 kVA	84/534 - 87/405

LMX 2

	Levage		Hoisting		Sollevamento	
	Distribution		Trolleying		Distribuzione	
	Orientation		Slewing		Rotazione	
	Translation		Travelling		Traslazione	
	Conforme aux directives CEE 84/534 et 87/405 sur le niveau acoustique		In compliance with the EEC 84/534 and 87/405 Instructions on noise level		Conforme alle direttive CEE 84/534 e 87/405 sul livello acustico	
	Nous consulter		Consult us		Consultateci	
	Heben		Elevación		起升	
	Katzfahren		Distribución		变幅	
	Schwenken		Orientación		回转	
	Kranfahren		Traslación		行走	
	Gemäss EWG-Richtlinien 84/534 und 87/405 für den Schall-Leistungspegel		Conforme con las directivas CEE 84/534 y 87/405 sobre el nivel acustico		符合 CEE 84/534 - CEE 87/405 声晌度规定	
	Auf Anfrage		Consultarnos		请向我方咨询	

Réf. 1997.44 LMX 6

POTAIN 
GRUPE LEGRIS INDUSTRIES

18.Rue de Charbonnières, B.P. 173
F-69132 ECULLY Cedex
Tél. (33)04.72.18.20.20
Fax (33)04.72.18.20.00
http://www.potain.com
E-mail : mkt@potain.fr

TOPKIT K3/59 C

Copyright.Reproduction interdite © POTAIN 1997

Deutschland
POTAIN GmbH Tel : 06.105.704.0
Italia
POTAIN S.p.A. Tel : 0.331.49.33.11
Singapore
POTAIN PTE LTD Tel : (00.65) 227.1550