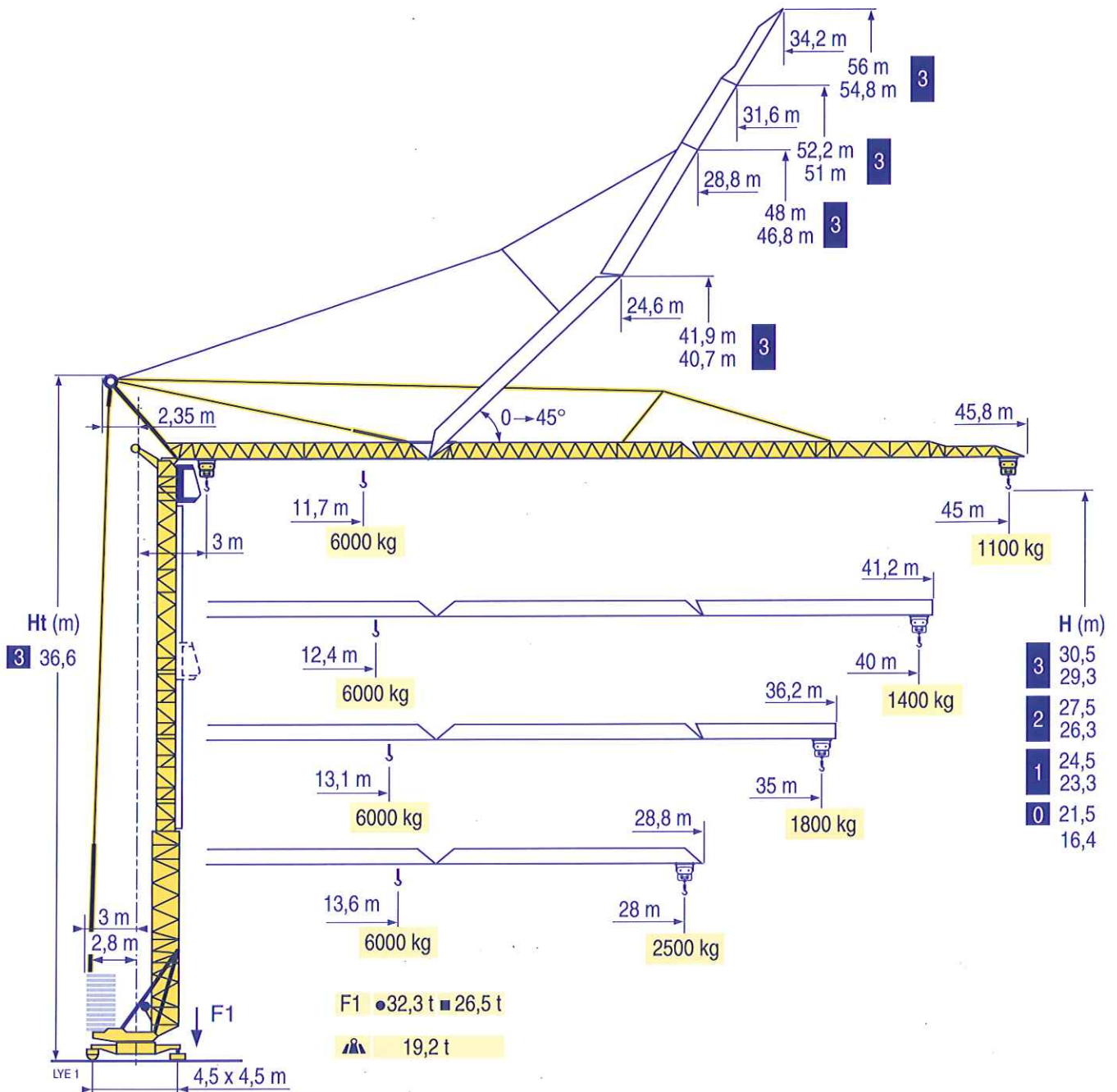


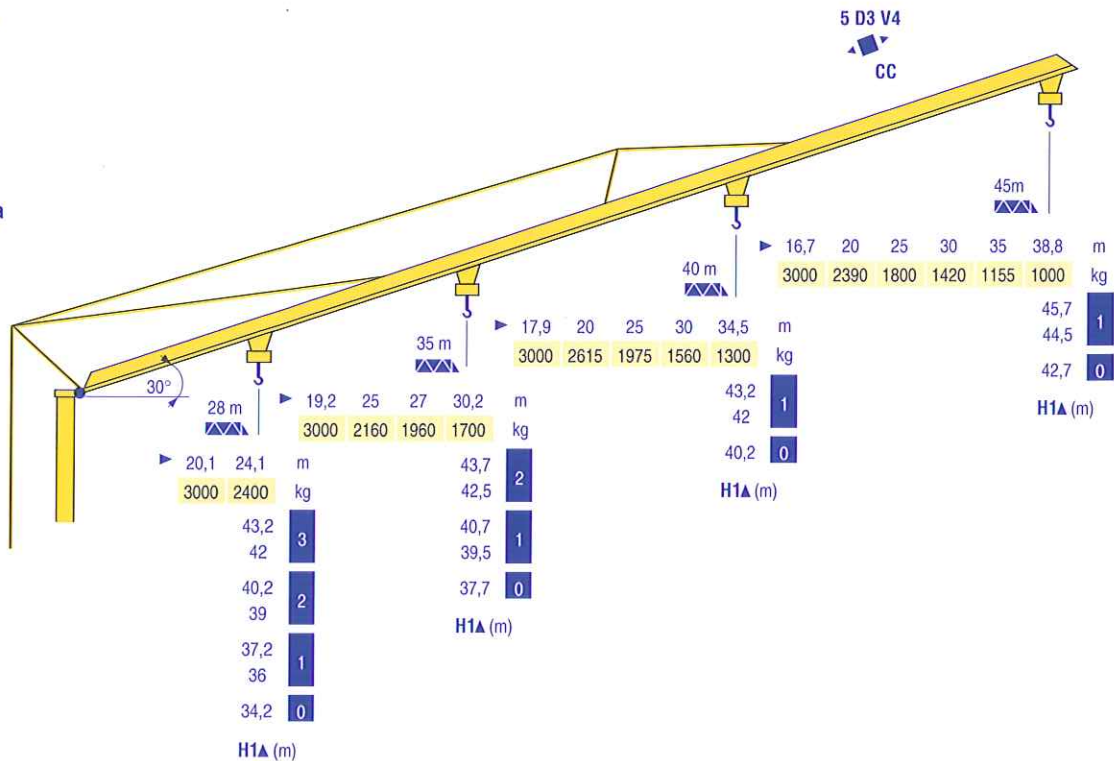
GTMR 346 B



Courbes de charges	45 m	3 ▶	11,7	13	15	17	20	23	25	27	30	33	35	37	40	43	45	m
Lastkurven			6000	5265	4400	3770	3090	2600	2345	2130	1865	1655	1535	1430	1290	1170	1100	kg
Load diagrams																		
Curvas de cargas	40 m	3 ▶	12,4	13	15	17	20	23	25	27	30	33	35	37	40		m	
Curve di carico			6000	5650	4730	4055	3325	2800	2530	2300	2020	1790	1660	1550	1400		kg	
Curva de cargas																		
LVE 1	35 m	3 ▶	13,1	15	17	20	23	25	27	30	33	35					m	
			6000	5080	4360	3580	3020	2725	2480	2180	1940	1800					kg	
	28 m	3 ▶	13,6	15	17	20	23	25	27	28							m	
			6000	5330	4580	3760	3175	2870	2615	2500							kg	

















Flèche relevée
Ausleger in Steilstellung
Luffing jib
Flecha izada
Braccio impennato
Lança inclinada

LVE 1



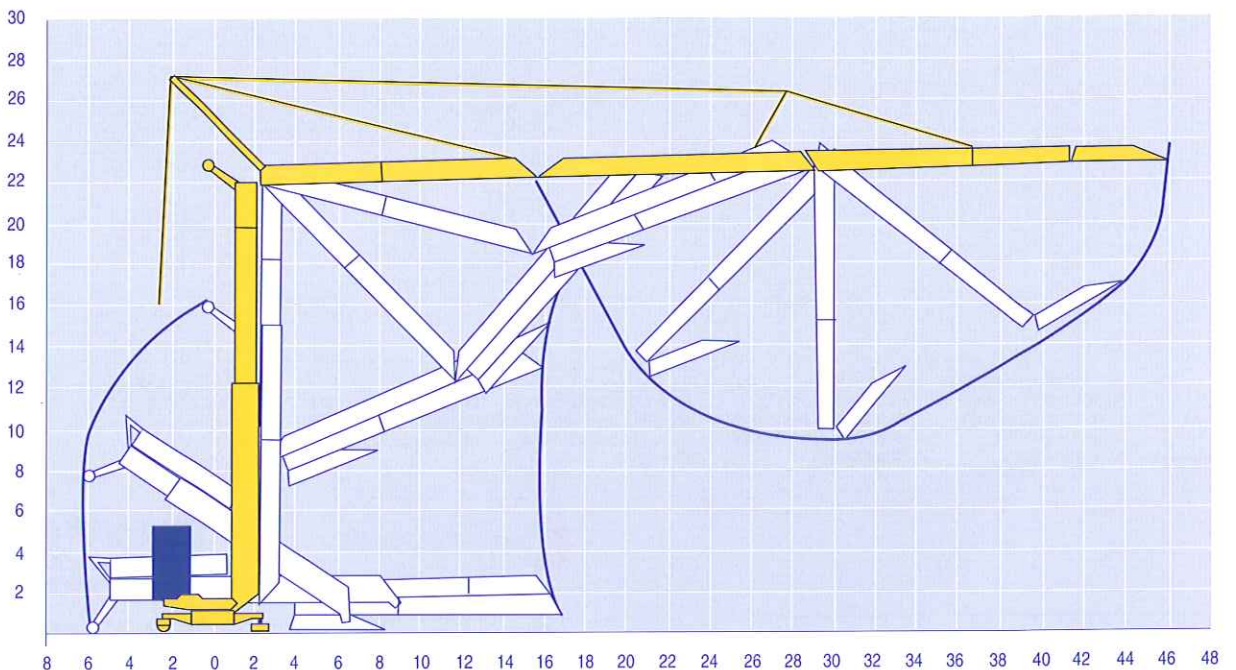
Mécanismes
Antriebe
Mechanisms
Mecanismos
Meccanismi
Mecanismos

LVE1

									ch - PS hp	kW
										
	20 LVF 15	m/min Kg	5,5 3000	27,5 3000	55 1500	2,7 6000	13,7 6000	27,5 3000	20	15
	5 D3 V4	m/min	15 - 30 - 58						5,5	4
	RCV 51	tr/min U/min rpm	0 → 0,8						6	4,4
	TDV 324	m/min	25						2 x 4	2 x 3
 R ≥ 8 m	TB 124	m/min	25						2 x 4	2 x 3
CEI 38		 IEC 38	 KVA							
400 V (+6% -10%) 50 Hz			30 kVA				2000/14			

Montage
Montage
Erection
Montaje
Montaggio
Montagem

LVE1



GTMR 346 B

POTAIN 

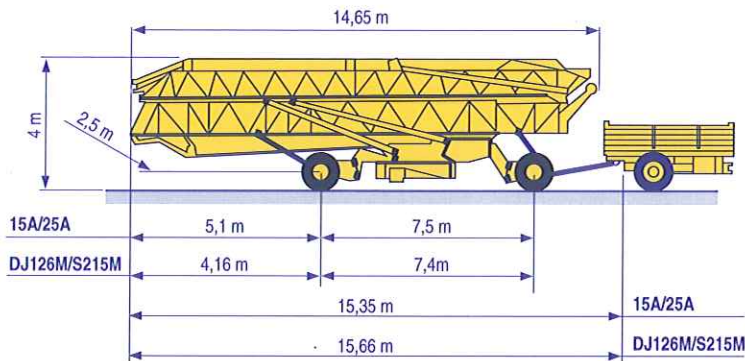
	F	D	GB	E	I	P
	Levage	Heben	Hoisting	Elevación	Sollevamento	Elevação
	Distribution	Katzfahren	Trolleying	Distribución	Distribuzione	Distribuição
	Orientation	Schwenken	Slewing	Orientación	Rotazione	Rotação
	Translation	Kranfahren	Travelling	Traslación	Traslazione	Translação
	Conforme aux directives CEE sur le niveau acoustique	Gemäss EWG-Richtlinien für den Schall-Leistungspegel	In compliance with the EEC Instructions on noise level	Conforme con las directivas CEE sobre el nivel acustico	Conforme alle direttive CEE sul livello acustico	Conforme as directivas CEE sobre o nível acústico

Transport
 Transport
 Transport
 Transporte
 Trasporto
 Transporte

LVE 1

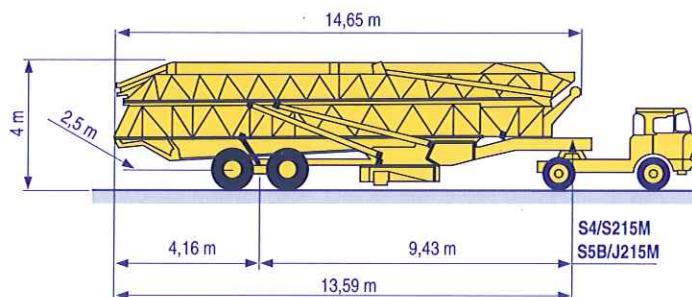
DJ126M/S215M

15A/25A



S4/S215M

S5B/J215M



Document commercial non contractuel. Pour toute information technique se référer à la notice correspondante

Unverbindliches Vertriebsdokument. Für technische Informationen, siehe die entsprechenden Anweisungen.

This commercial document is not legally binding. For any technical information, please refer to the corresponding instructions.

Documento commercial no contractual. Para cualquier información técnica, ver la noticia correspondiente.

Documento commerciale non vincolante. Per tutte le informazioni tecniche fare riferimento al catalogo istruzioni

Documento comercial não contractual. Para qualquer informação técnica complementar consultar as respectivas instruções

Manitowoc
 Crane CARE

POTAIN 
 Manitowoc Crane Group



Americas

Tel : +1 920 683 6322
 Tel : +1 717 597 8121

Europe - Middle East - Africa

Tel : +(33) 4 72 81 50 00
 Tel : +(44) 191 565 6281

Asia - Pacific

Tel : +(65) 6861 7133
 Fax : +(65) 6862 4142

www.manitowoccrane.com

18, rue de Charbonnières - B.P.173
 69132 ECULLY Cedex - France

Tél. : (33) 4 72 18 20 20
 Fax : (33) 4 72 18 20 00
 www.manitowoccrane.com www.potain.com

GTMR 346 B

Réf. 2003 48 LVE 1

Copyright.Reproduction interdite © POTAIN 2003