

# CITY CRANE MC 65

LLD 1

**POTAIN** 

RADASANAT.COM

(0098) - 9121834995



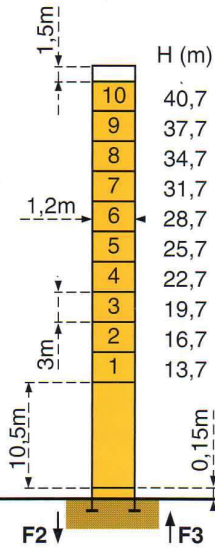
Mats - Maste - Masts Mástil  
Torre - 塔身



1,2m

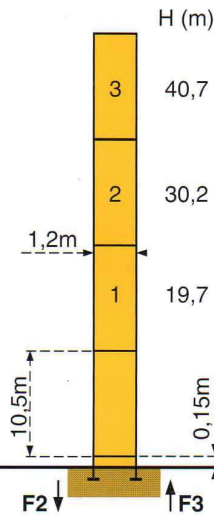
Flèche - Ausleger - Jib  
Flecha - Braccio - 起重臂  
21,5m → 42m

**P 12A**



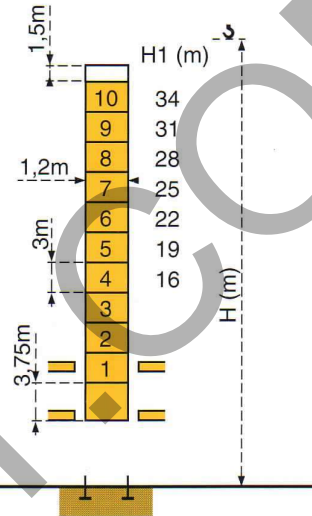
F2	● 61t	■ 93t
F3	● 49t	■ 81t
	15,5t	

**P 12A**



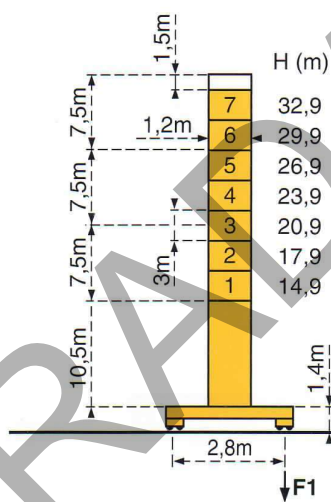
F2	● 61t	■ 93t
F3	● 49t	■ 81t
	15,5t	

**B 125A**



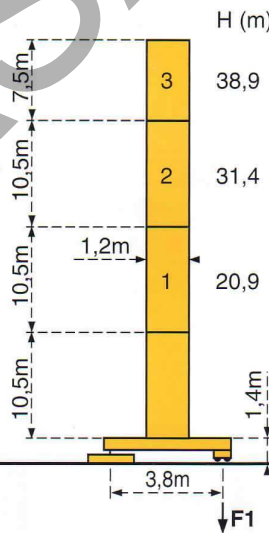
Voir ci-contre  
Siehe nebenstehend  
See opposite  
Ver pagina opuesta  
Vedi pagina accanto  
见旁图

**ZE 12A**



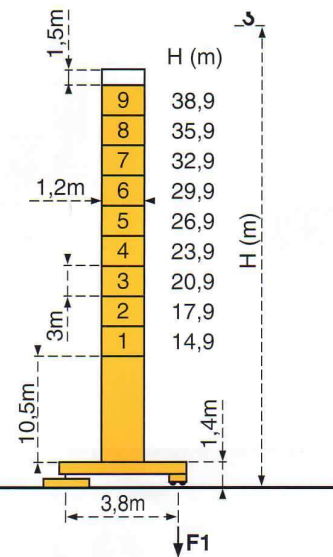
F1	● 40t	■ 44t
	18t	

**ZF 12A**



F1	● 38t	■ 48t
	20,5t	

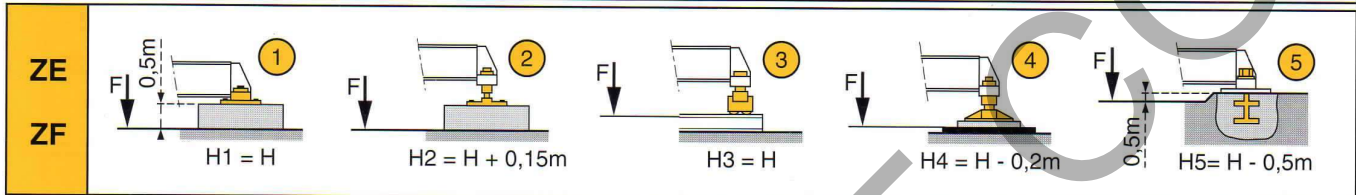
**ZF 12A**



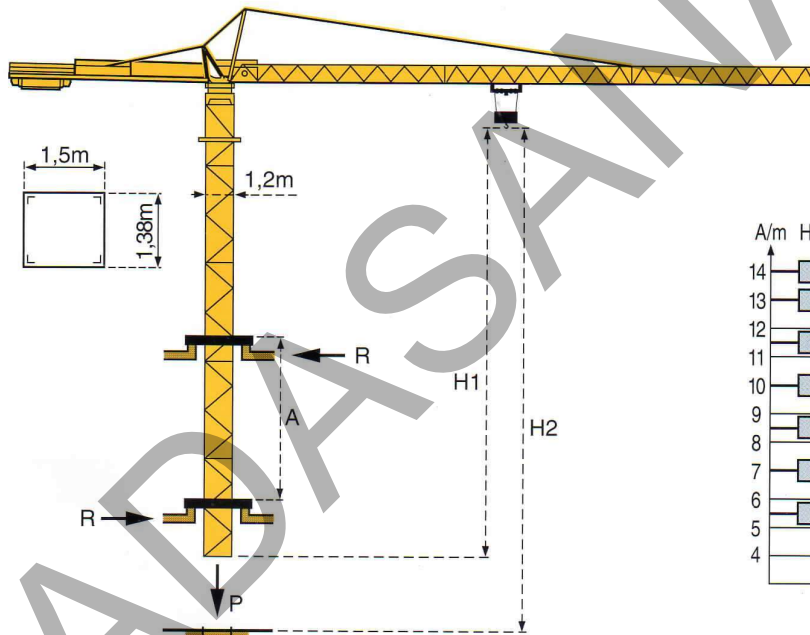
F1	● 38t	■ 48t
	20,5t	

**Courbes de charges - Lastkurven - Load diagrams - Curvas de cargas - Curve di carico - 负荷曲线**

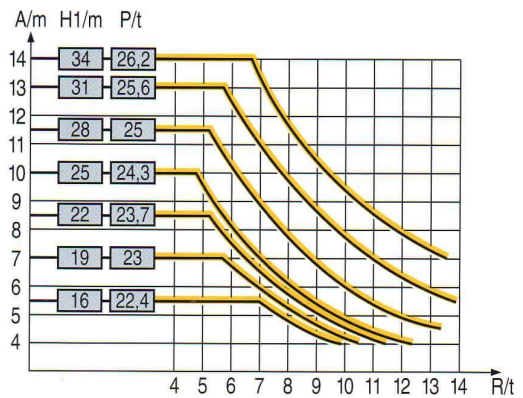
	Flèche Ausleger Jib Flecha Braccio 起重臂										
1,8 →	22,9	25	27	30	32	35	37	40	42	m	
42m	2,5	2,26	2,06	1,82	1,68	1,51	1,41	1,28	1,2	t	
1,8 →	22,9	25	27	30	32	35	36,5				
36,5m	2,5	2,26	2,06	1,82	1,68	1,51	1,43				
1,8 →	23,3	25	27	30	31,5						
31,5m	2,5	2,3	2,1	1,85	1,75						
1,8 →	22,9	25	26,5								
26,5m	2,5	2,26	2,11								
1,8 →	21,5										
21,5m	2,5										



**Télescopage sur dalles - Kletterkrane im Gebäude - Climbing crane**  
**Telescopage gruas trepadoras - Gru in cavedio - 楼板上顶升**



**B 125A**



A Distance entre cadres  
H1 Hauteur grue  
P Poids de la grue (en service)  
R Réaction horizontale

A Abstand zwischen den Rahmen  
H1 Kranhöhe  
P Krangewicht (in Betrieb)  
R Horizontalkräfte

A Distance between collars  
H1 Crane height  
P Crane weight (in service)  
R Horizontal reaction

A Distancia entre marcos  
H1 Altura grúa  
P Peso de la grúa (en servicio)  
R Reaccion horizontal

A Distanza fra i telai  
H1 Altezza gru  
P Peso della gru (in servizio)  
R Reazione orizzontale

A 各附着框之间距离  
H1 工作状态下降机高度

P 工作状态下降机重量  
R 水平反力

● En service  
■ Hors service  
⊗ A vide sans lest avec flèche et hauteur maximum.

● In Betrieb  
■ Ausser Betrieb  
⊗ Ohne Last und Ballast mit Maximalausleger und Maximalhöhe.













● In service  
■ Out of service  
⊗ Without load and ballast with longest jib and maximum height.

● En servicio  
■ Fuera de servicio  
⊗ Sin carga, sin lastre con flecha y altura máxima.

● In servizio  
■ Fuori servizio  
⊗ A vuoto senza zavorra e con braccio massimo e altezza massima.

● 工作状态  
■ 非工作状态  
⊗ 空载，无配重，起重臂和高度均为最大值

Mécanismes - Antriebe - Mechanisms - Mecanismos - Meccanismi - 机构

				m/min	t		ch -PS hp	kW
<b>Levage</b> <b>Heben</b> <b>Hoisting</b> <b>Elevación</b> <b>Sollevamento</b> 起升	15 PC 13 	  	7	2,5	98 m	15	11	
			21	2,5				
			42	1,3				
	25 PC 13 	  	7	2,5	210 m	25	18,4	
			36	2,5				
			72	1,3				
<b>Distribution - Katzfahren - Trolleying</b> <b>Distribución - Ditrribuzione - 变幅</b>		3 D2 V5	21 - 42			3	2,2	
<b>Orientation - Schwenken - Slewing</b> <b>Orientación - Rotazione - 回转</b>		RCV 40	0 → 0,8 tr/min U/min-rpm			6	4,5	
<b>Translation - Kranfahren - Travelling</b> <b>Traslación - Traslazione - 行走</b>	ZE - ZF 	TVD 324 C1	26			2 x 4	2 x 2,9	
Réseau - Netzstrom - Mains supply - Red - Rete elettrica - 电网						CEI 38 IEC 38	400V (+6%,-10%) 50Hz	
Puissance électrique nécessaire - Anschlusswert - Necessary electric power Potencia eléctrica necesaria - Potenza elettrica necessaria - 所需功率							15 PC : 25 KVA 25 PC : 35 KVA	
Groupe électrogène - Stromaggregat - Generator set - Grupo electrogeno - Gruppo elettrogeno - 发电机组							*	

\*Nous consulter - Auf Anfrage - Consult us - Consultarnos - Consultateci - 请向我方咨询

Conforme aux directives CEE 84/534 et 87/405 sur le niveau acoustique - Gemäss EWG-Richtlinien 84/534 und 87/405 für den Schall- Leistungspegel  
 In compliance with the EEC 84/534 and 87/405 Instructions on noise level - Conforme con las directivas CEE 84/534 y 87/405 sobre el nivel acustico  
 Conforme alle direttive CEE 84/534 e 87/405 sul livello acustico - 符合 CEE 84/534 - CEE 87/405 声响应规定



FEM 1.001-A3

Copyright.Reproduction interdite © POTAIN 1997



18.Rue de Charbonnières, B.P. 173-F 69132 ECULLY Cedex  
 Tél. (33)04.72.20.20.20 - Fax (33)04.72.20.20.00  
 http://www.potain.fr - E-mail : mkt@potain.fr

POTAIN GmbH Deutschland Tel : 06.105.704.0  
 SIMMAPOTAIN Italia Tel : 039.65.631  
 Zhangjiagang POTAIN China Tel : 520. 877.1451

(0098) - 9121834995  
 CITY CRANE MC 65

Réf. 1997.07.LLD 1

Courtesy of Crane.Market

修改权在我方

Modifiche riservate

Modificaciones reservadas

Subject to modification

Änderungen vorbehalten

Modifications réservées

Printed in France

Réalisation SODIPE