

# CITY CRANE MC 85

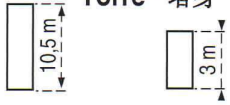


RADASANAT.COM

(0098) - 9121834995

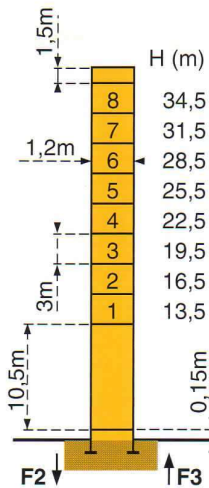


Mats - Maste - Masts Mástil  
Torre - 塔身



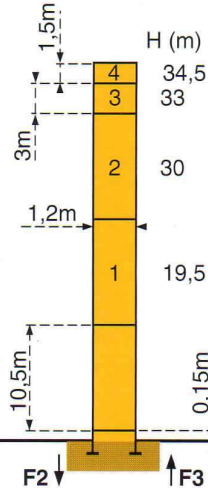
□ 1,2m

Flèche - Ausleger - Jib  
Flecha - Braccio - 起重臂  
30m → 48m



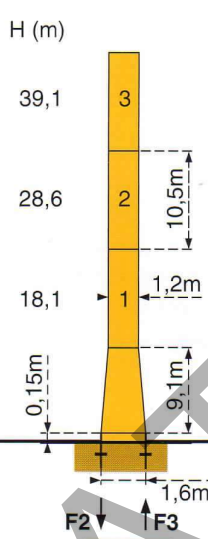
**P 12 A**

F2	● 69t	■ 72t
F3	● 50t	■ 54t
	22t	



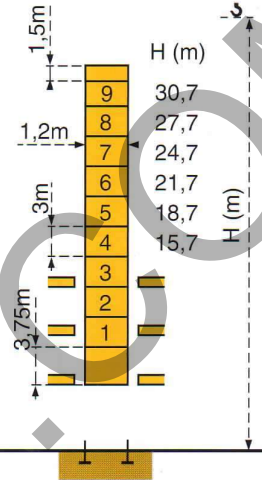
**P 12 A**

F2	● 69t	■ 72t
F3	● 50t	■ 54t
	22t	



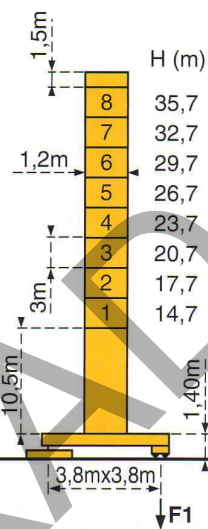
**P 16 A**

F2	● 60t	■ 69t
F3	● 40t	■ 52t
	22,5t	



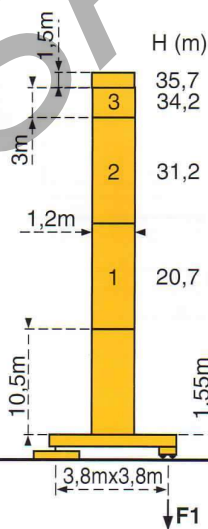
**B 125A**

Voir ci-contre  
Siehe nebenstehend  
See opposite  
Ver pagina opuesta  
Vedi pagina accanto  
见旁图



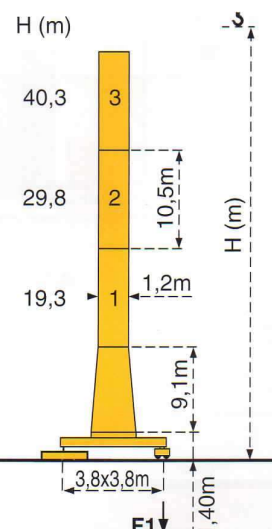
**ZF12A**

F1	● 41t	■ 41t
	27,5t	



**ZF12A**

F1	● 41t	■ 41t
	27,5t	





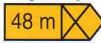

**ZC16A**


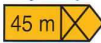

F1	● 47t	■ 53t
	28t	

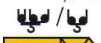
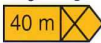

F = Réactions - Eckdrücke - Reactions - Reacciones - Reazioni - 反力

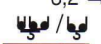
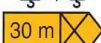

**Courbes de charges - Lastkurven - Load diagrams - Curvas de cargas - Curve di carico - 负荷曲线**

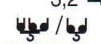
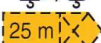

 Flèche Ausleger Jib Flecha Braccio 起重臂

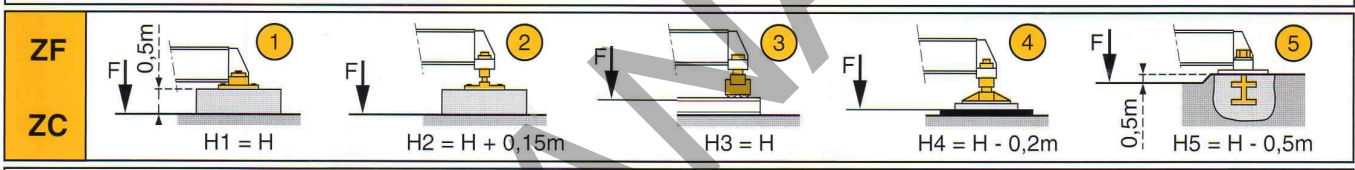
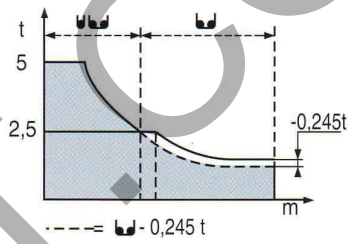
3,2 →	15,3	17	20	22	25	27,2	29,5	32	35	37	40	42	45	48	m							
	5	4,4	3,6	3,2	2,75	2,5	2,5	2,25	2,05	1,9	1,75	1,65	1,5	1,4	t							
48 m 														29,5	32	35	37	40	42	45	48	m
														2,5	2,25	2,05	1,9	1,75	1,65	1,5	1,4	t

3,2 →	15,3	17	20	22	25	27,2	29,5	32	35	37	40	42	45	m							
	5	4,4	3,6	3,2	2,75	2,5	2,5	2,25	2,05	1,9	1,75	1,65	1,5	t							
45 m 														29,5	32	35	37	40	42	45	m
														2,5	2,25	2,05	1,9	1,75	1,65	1,5	t

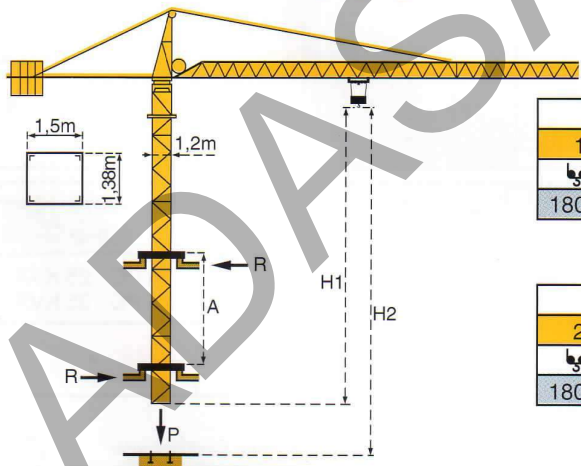
3,2 →	15,7	17	20	22	25	27,8	30,2	32	35	37	40	m						
	5	4,5	3,7	3,3	2,85	2,5	2,5	2,3	2,1	1,95	1,8	t						
40 m 													30,2	32	35	37	40	m
													2,5	2,3	2,1	1,95	1,8	t


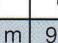
3,2 →	16,3	17	20	22	25	27	30	m	
	5	4,8	3,9	3,5	3	2,75	2,4	t	
30 m 								30	m
								2,5	t

3,2 →	16,3	17	20	22	25	m	
	5	4,8	3,9	3,5	3	t	
25 m 						25	m
						3	t

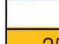
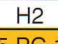


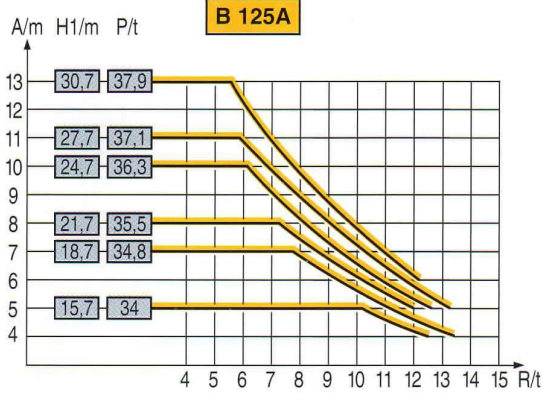
**Télescopage sur dalles - Kletterkrane im Gebäude - Climbing crane**  
**Telescopage gruas trepadoras - Gru in cavedio - 楼板上顶升**



H2	
	
15 PC 13	180 m / 90 m














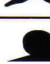
















H2	
	
25 PC 13	180 m / 90 m




A Distance entre cadres H1 Hauteur grue P Poids de la grue (en service) R Réaction horizontale	A Abstand zwischen den Rahmen H1 Kranhöhe P Krangewicht (in Betrieb) R Horizontalkräfte	A Distance between collars H1 Crane height P Crane weight (in service) R Horizontal reaction	A Distancia entre marcos H1 Altura grúa P Peso de la grúa (en servicio) R Reaccion horizontal	A Distanza fra i telai H1 Altezza gru P Peso della gru (in servizio) R Reazione orizzontale
A 各附着框之间距离 H1 工作状态下塔机高度	A 各附着框之间距离 H1 工作状态下塔机高度	A 各附着框之间距离 H1 工作状态下塔机高度	A 各附着框之间距离 H1 工作状态下塔机高度	A 各附着框之间距离 H1 工作状态下塔机高度

- En service
- In Betrieb
- In service
- En servicio
- In servizio
- 工作状态
- Hors service
- Ausser Betrieb
- Out of service
- Fuera de servicio
- Fuori servizio
- 非工作状态
- ⊕ A vide sans lest avec flèche et hauteur maximum.
- ⊕ Ohne Last und Ballast mit Maximalausleger und Maximalhöhe.
- ⊕ Without load and ballast with longest jib and maximum height.
- ⊕ Sin carga, sin lastre con flecha y altura máxima.
- ⊕ A vuoto senza zavorra e con braccio massimo e altezza massima.
- ⊕ 空载, 无配重, 起重臂和高度均为最大值





				m/min	t		ch -PS hp	kW	
<b>Levage</b> <b>Heben</b> <b>Hoisting</b> <b>Elevación</b> <b>Sollevamento</b> 起升	15 PC 13 	  		7	2,5	360 m	15	11	
				21	2,5				
				42	1,3				
		  		3,5	5				
				10,5	5				
				21	2,6				
	25 PC 13 	  	  		6,6	2,5	360m	25	18,4
					33	2,5			
					66	1,3			
		  		3,3	5				
				16,5	5				
				33	2,6				

<b>Distribution - Katzfahren - Trolleying</b> <i>Distribución - Ditribuzione - 变幅</i>		3 D2 V5	21 - 42				3	2,2
--	---	---------	---------	--	--	--	---	-----

<b>Distribution - Katzfahren - Trolleying</b> <i>Distribución - Ditribuzione - 变幅</i>		4 D3 V3	15-30-58				4	3
--	---	---------	----------	--	--	--	---	---

<b>Orientation - Schwenken - Slewing</b> <i>Orientación - Rotazione - 回转</i>		RCV 80	0 → 0,8 tr/min U/min-rpm				8	5,0
---	--	--------	--------------------------------	--	--	--	---	-----

<b>Translation</b> <b>Kranfahren</b> <b>Travelling</b> <b>Traslación</b> <b>Traslazione</b> 行走	ZF 	TVD 324 C1	26				2 x 4	2 x 2,9
	ZC 	RT 224	25				2 x 4	2 x 2,9

Réseau - Netzstrom - Mains supply - Red - Rete elettrica - 电网						CEI 38 IEC 38	400V (+6%,-10%) 50Hz	
Puissance électrique nécessaire - Anschlusswert - Necessary electric power <i>Potencia eléctrica necesaria - Potenza elettrica necessaria - 所需功率</i>						15 PC : 25 KVA 25 PC : 35 KVA		
Groupe électrogène - Stromaggregat - Generator set - Grupo electrogeno - Gruppo elettrogeno - 发电机组						*		

\*Nous consulter - Auf Anfrage - Consult us - Consultarnos - Consultateci - 请向我方咨询

Conforme aux directives CEE 84/534 et 87/405 sur le niveau acoustique - Gemäss EWG-Richtlinien 84/534 und 87/405 für den Schall- Leistungspegel  
 In compliance with the EEC 84/534 and 87/405 Instructions on noise level - Conforme con las directivas CEE 84/534 y 87/405 sobre el nivel acustico  
 Conforme alle direttive CEE 84/534 e 87/405 sul livello acustico - 符合 CEE 84/534 - CEE 87/405 声响应规定



FEM 1.001-A3

Copyright.Reproduction interdite © POTAIN 1996

**POTAIN** 

GROUPE LEGRIS INDUSTRIES

18.Rue de Charbonnières, B.P. 173-F 69132 ECULLY Cedex  
 Tél. (33)04.72.20.20.20 - Fax (33)04.72.20.20.00  
 http://www.potain.fr - E-mail : mkt@potain.fr

POTAIN GmbH Deutschland Tel : 06.105.704.0  
 SIMMAPOTAIN Italia Tel : 039.65.631  
 Zhangjiagang POTAIN China Tel : 520. 877.1451

**CITY CRANE MC 85**

Réf. 1996.30 LKK 2

RADASANAT.COM

(0098) - 9121834995