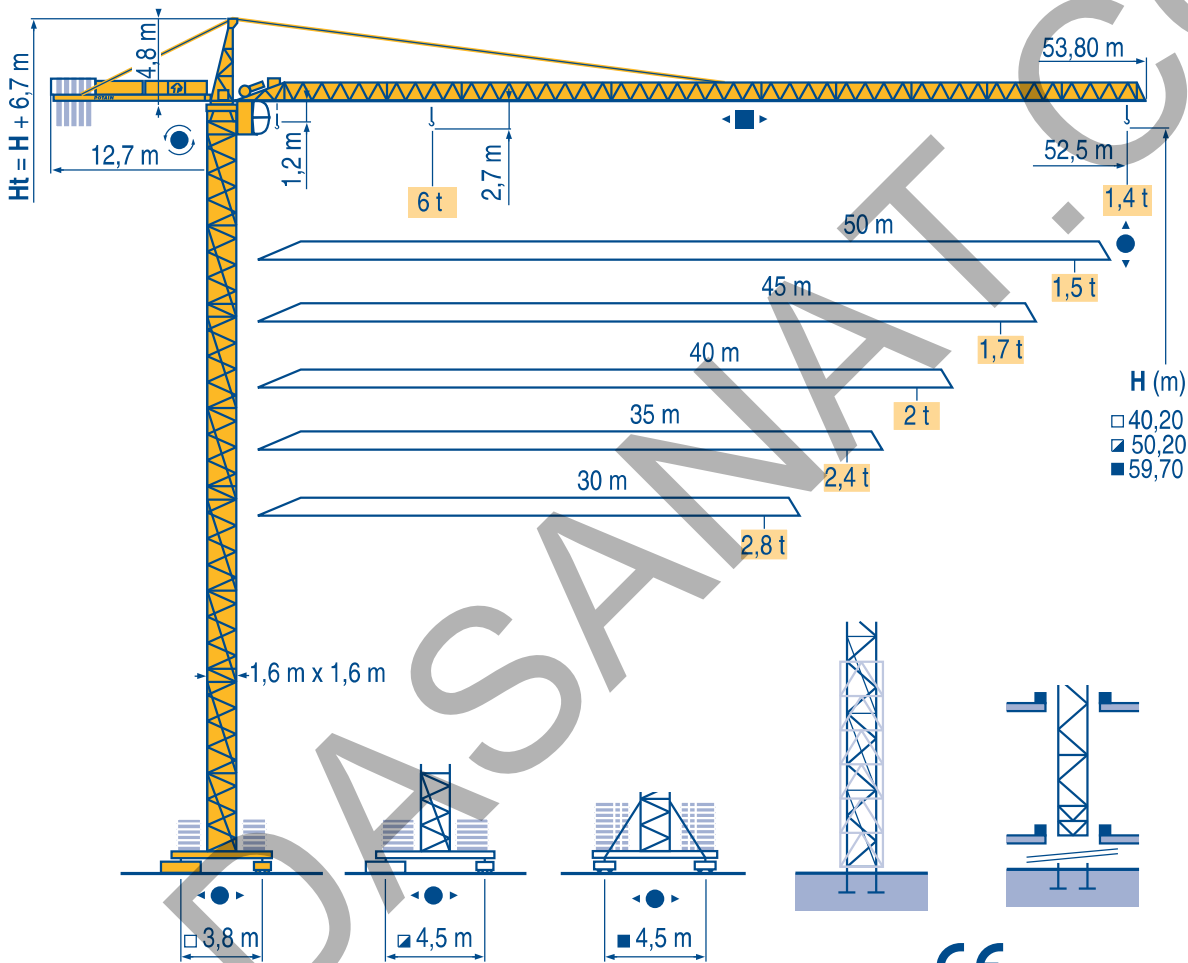


CITY CRANE MD 95 B



- Igo HD HDM
- HDT
- GTMR
- CITY CRANE
- TOPKIT MD MAXI MD
- MAXI TOPKIT
- Topless MDT
- MR

H (m)
 □ 40,20
 ▣ 50,20
 ■ 59,70

CE FEM 1.001-A3



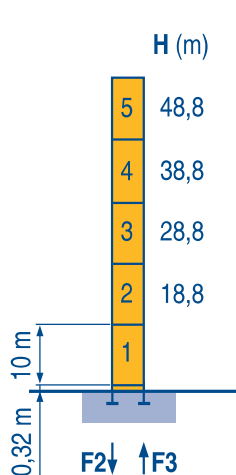
Mat / Réactions
Maste / Eckdrücke
City 1,6 m



Masts / Reactions
Mástil / Reacciones
City 1,6 m

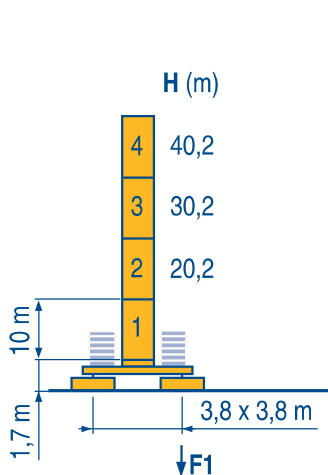


Torre / Reazioni
Tramo/Reações
City 1,6 m



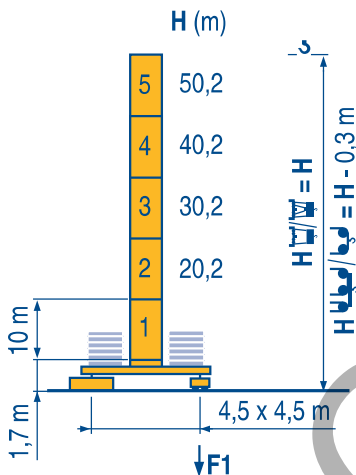
P 41 A

F2	● 93 t	■ 129 t
F3	● 61 t	■ 101 t
	30 t	



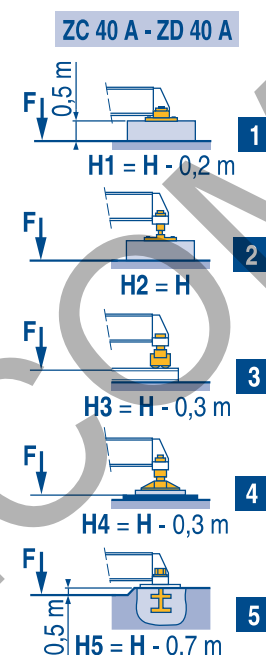
ZC 40 A

F1	● 54 t	■ 61 t
	32 t	



ZD 40 A

F1	● 60 t	■ 72 t
	37 t	



ZC 40 A - ZD 40 A

LSN 1

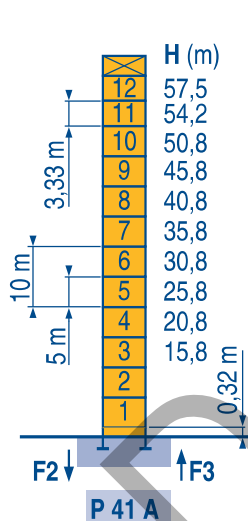
Télescopable 1,6 m
Teleskopierbar 1,6 m



Telescopic 1,6 m
Telescopico 1,6 m

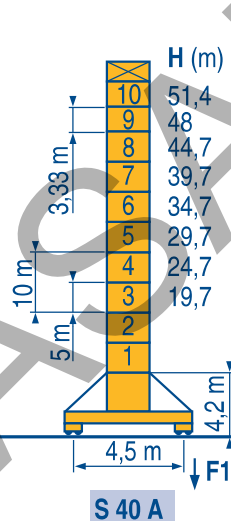


Telescopico 1,6 m
Telescopagem 1,6 m



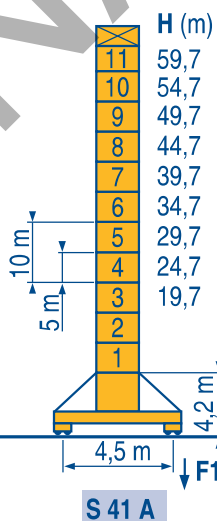
P 41 A

F2	● 109 t	■ 171 t
F3	● 76 t	■ 141 t
	43 t	



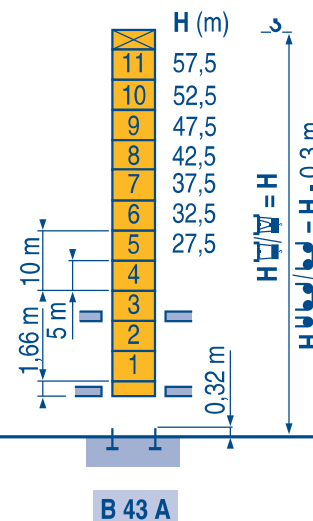
S 40 A

F1	● 67 t	■ 87 t
	48 t	



S 41 A

F1	● 83 t	■ 116 t
	51 t	



B 43 A



LSN 1

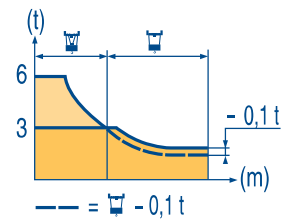
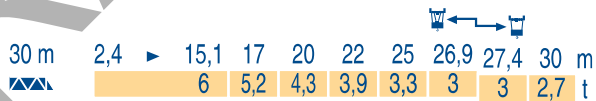
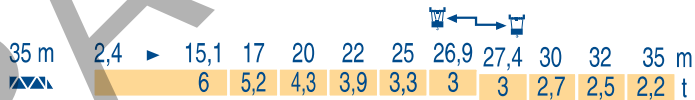
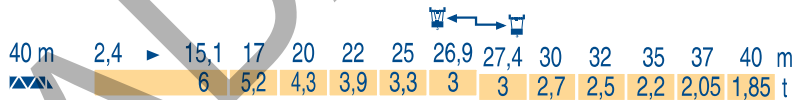
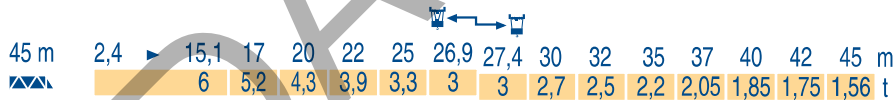
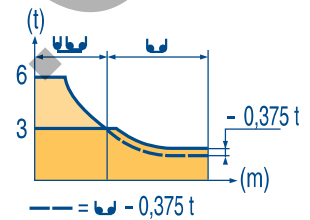
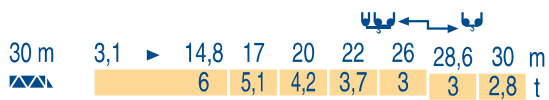
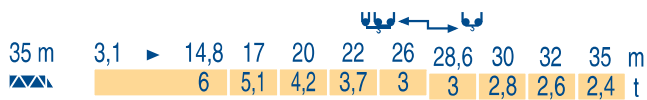
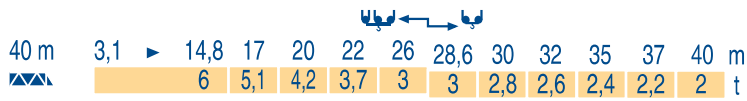
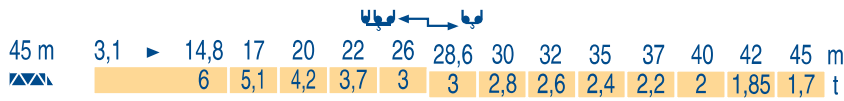
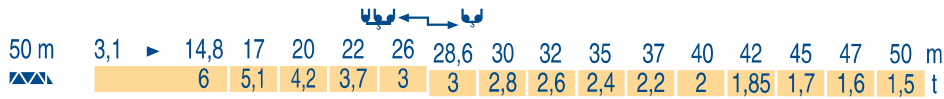
- Voir télescopage sur dalles
- Réactions en service
- Réactions hors service
- A vide sans lest (ni train de transport) avec flèche et hauteur maximum.

- Siehe Kletterkrane im Gebäude
- Reaktionskräfte in Betrieb
- Reaktionskräfte außer Betrieb
- Ohne Last, Ballast (und Transportachse), mit Maximalausleger und Maximalhöhe.

- See climbing crane
- Reactions in service
- Reactions out of service
- Without load, ballast (or transport axes), with maximum jib and maximum height.

- Veá grua trepadora
- Reacciones en servicio
- Reacciones fuera de servicio
- Sin carga, sin lastre, (ni tren de transporte), flecha y altura máxima.

- Consultare gru in cavedio
- Reazioni in servizio
- Reazioni fuori servizio
- A vuoto, senza zavorra (ne assali di trasporto) con braccio massimo e altezza massima.



LSN 1

Télescopage sur dalles
Kletterkrane im Gebäude



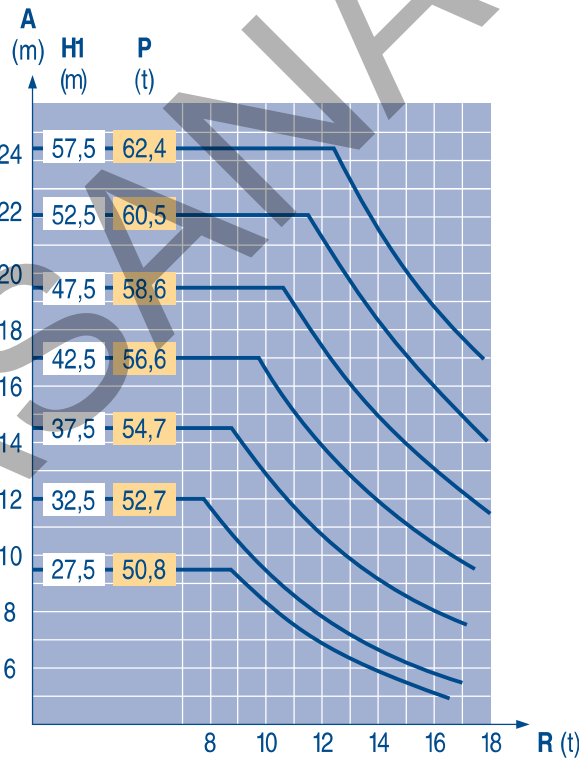
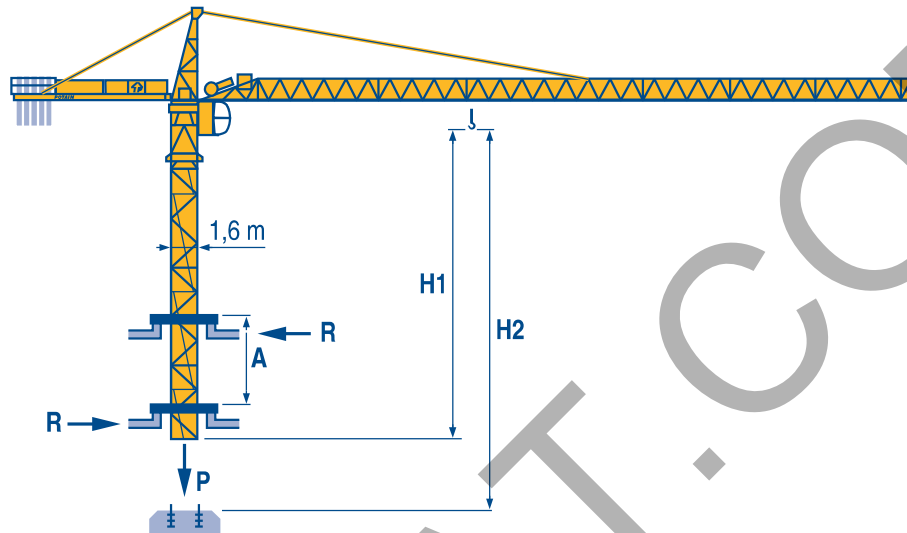
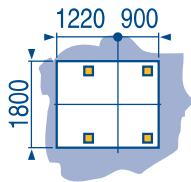
Climbing crane
Telescopage gruas trepadoras



Gru in cavedio
Telescopagem sobre lages



B 43 A



LSN 1

A	Distance entre cadres	F	Abstand zwischen den Rahmen	D	Distance between collars	GB	Distancia entre marcos	E	Distanza fra i telai	I	Distância entre quadros	P
H1	Hauteur grue		Kranhöhe		Crane height		Altura grúa		Altezza gru		Altura da grua	
P	Poids de la grue (en service)		Krangewicht (in Betrieb)		Crane weight (in service)		Peso de la grúa (en servicio)		Peso della gru (in servizio)		Peso da grua (em serviço)	
R	Réaction horizontale		Horizontalkräfte		Horizontal reaction		Reaccion horizontal		Reazione orizzontale		Reacção horizontal	

Lest de contre-flèche
Gegenauslegerballast



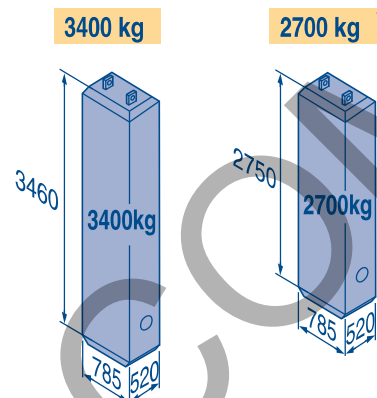
Counter-jib ballast
Lastre de contra flecha



Contrappeso
Lastros da contra lança



		3400 kg	2700 kg	🏗️ (kg)
52,5 m	12 m	5	-	17 000
50 m	12 m	3	2	15 600
45 m	12 m	1	4	14 200
40 m	12 m	4	-	13 600
35 m	12 m	2	2	12 200
30 m	12 m	-	4	10 800



LSN 1

Lest de base
Grundballast



Base ballast
Lastre de base



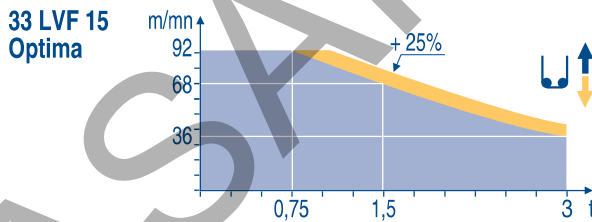
Zavorra di base
Lastros da base



∅1,6 m	ZC 40 A - ● -	H (m)	40,2	30,2	20,2						
		🏗️ (t)	45	35	30						
∅1,6 m	ZD 40 A - ● -	H (m)	50,2	40,2	30,2	20,2					
		🏗️ (t)	70	40	35	30					
∅1,6 m	S 40 A - ● -	H (m)	51,4	49,7	44,7	39,7	34,7	29,7	24,7	19,7	
		🏗️ (t)	78	72	54	36	18	18	18	18	
∅1,6 m	S 41 A - ● -	H (m)	59,7	54,7	49,7	44,7	39,7	34,7	29,7	24,7	19,7
		🏗️ (t)	114	96	72	54	36	18	18	18	18

LSN 1

		↕ ↑			↕↕ ↑			ch - PS hp	kW	🌀	
↕	25 PC 15	m/min	6	30	60	3	15	30	25	18,4	260 m
		t	3	3	1,5	6	6	3			
	33 PC 15	m/min	6	37,5	75	3	19	37,5	33	24	260 m
		t	3	3	1,5	6	6	3			
33 LVF 15 Optima	m/min	3 → 12 → 36 → 48 → 68 → 92	1,5 → 6 → 18 → 24 → 34 → 46	30	22	260 m					
	t	3 3 3 2,25 1,5 0,75	6 6 6 4,5 3 1,5								
◀ ▶	4 D3 V3	m/min	15 - 30 - 58						4	3	
🌀	RCV 145	tr/min U/min rpm	0 → 0,8						2 x 6	2 x 4,4	
ZC 40 A ZD 40 A ◀ ▶ 🌀	RT 224	m/min	25						2 x 4	2 x 2,9	
S 40 A ◀ ▶ 🌀	RT 324 R 10 m	m/min	12,5 - 25						2 x 7	2 x 5,2	
S 41 A ◀ ▶ 🌀	RT 443 A1 2V R 10 m	m/min	15 - 30						4 x 5	4 x 3,7	
CEI 38	IEC 38	kVA						🎧			
400 V (+6% -10%) 50 Hz		25 PC : 40 kVA 33 PC : 50 kVA 33 LVF : 50 kVA						84/534 - 87/405			



LSN 1

↕	Levage	F	Heben	D	Hoisting	GB	Elevación	E	Sollevamento	I	Elevação	P
◀ ▶	Distribution		Katzfahren		Trolleying		Distribución		Distribuzione		Distribuição	
🌀	Orientation		Schwenken		Slewing		Orientación		Rotazione		Rotação	
◀ ▶	Translation		Kranfahren		Travelling		Traslación		Traslazione		Translação	
🎧	Conforme aux directives CEE 84/534 et 87/405 sur le niveau acoustique		Gemäss EWG-Richtlinien 84/534 und 87/405 für den Schall-Leistungspegel		In compliance with the EEC 84/534 and 87/405 Instructions on noise level		Conforme con las directivas CEE 84/534 y 87/405 sobre el nivel acustico		Conforme alle direttive CEE 84/534 e 87/405 sul livello acustico		Conforme as directivas CEE 84/534 e 87/405 sobre o nível acústico	

Document commercial non contractuel. Pour toute information technique se référer à la notice correspondante

Unverbindliches Vertriebsdokument. Für technische Informationen, siehe die entsprechenden Anweisungen.

This commercial document is not legally binding. For any technical information, please refer to the corresponding instructions.

Documento comercial no contractual. Para cualquier información técnica, ver la noticia correspondiente.

Documento commerciale non vincolante, per tutte le informazioni tecniche fare riferimento al catalogo istrusioni

Documento comercial não vinculante, para qualquer informação técnica complementar consultar as respectivas instruções

RADASANAT.COM

POTAIN ↑
18, Rue de Charbonnières, B.P. 173
F-69132 ECULLY Cedex
Tél. (33)04.72.18.20.20
Fax (33)04.72.18.20.00
http://www.potain.com
E-mail : mkt@potain.fr

Manitowoc
(0098) - 9121834995
Manitowoc Crane Group

Deutschland
POTAIN GmbH Tel : 06.1.05.70.40
Italia
POTAIN S.p.A. Tel : 0.331.49.33.11
Portugal
POTAIN Portugal Tel : 22.968.08.89
Singapore
MANITOWOC POTAIN PTE LTD Tel : 227.15.50

Copyright.Reproduction interdite © POTAIN 2000
CITY CRANE MD 95 B
Réf. 2000.05 LSN 3

Reserva de modificações
Modifiche riservate
Modificaciones reservadas
Subject to modification
Änderungen vorbehalten
Modifications réservées

Printed in France

Realisation HeadLines