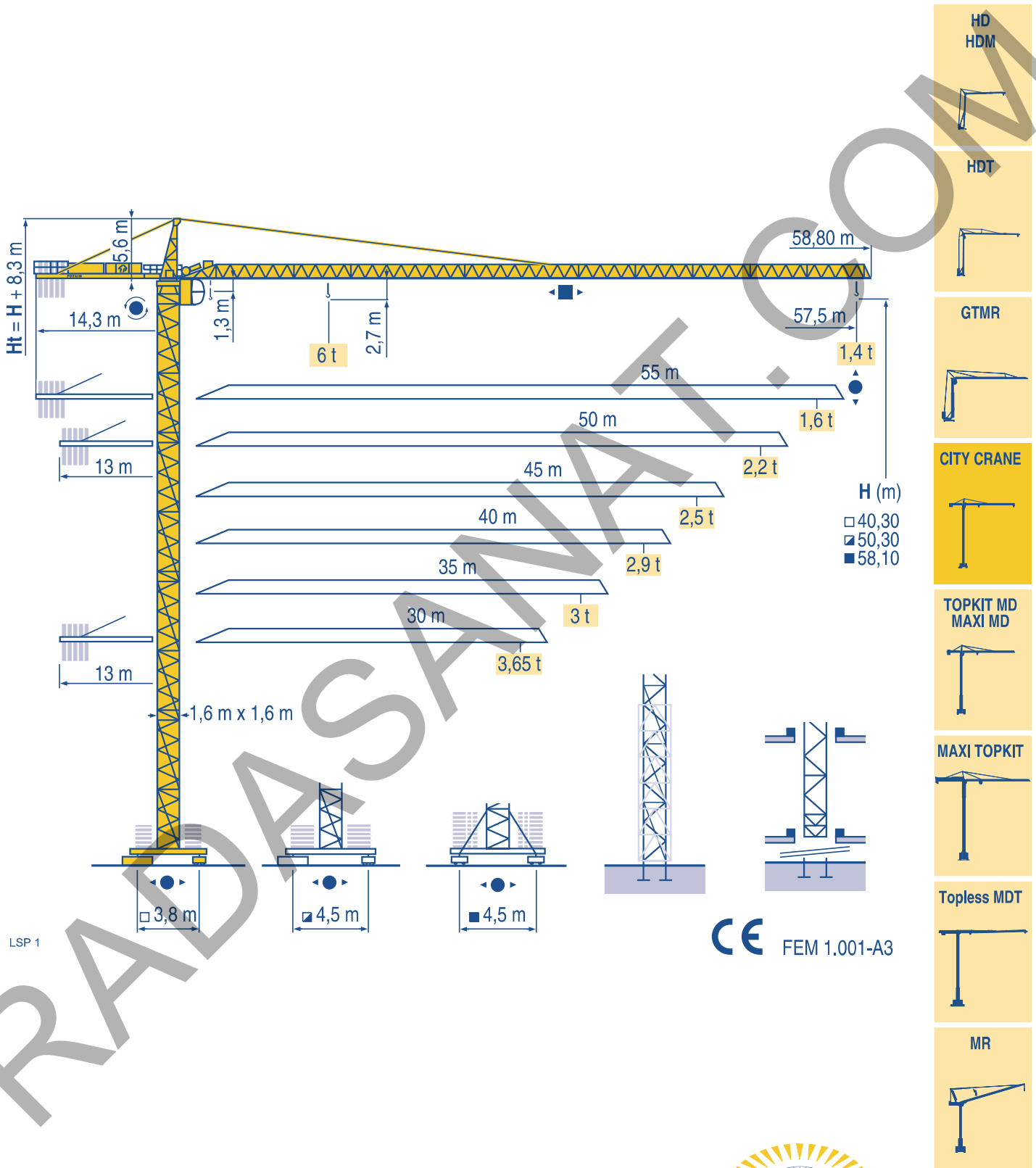


# CITY CRANE MD 125 B

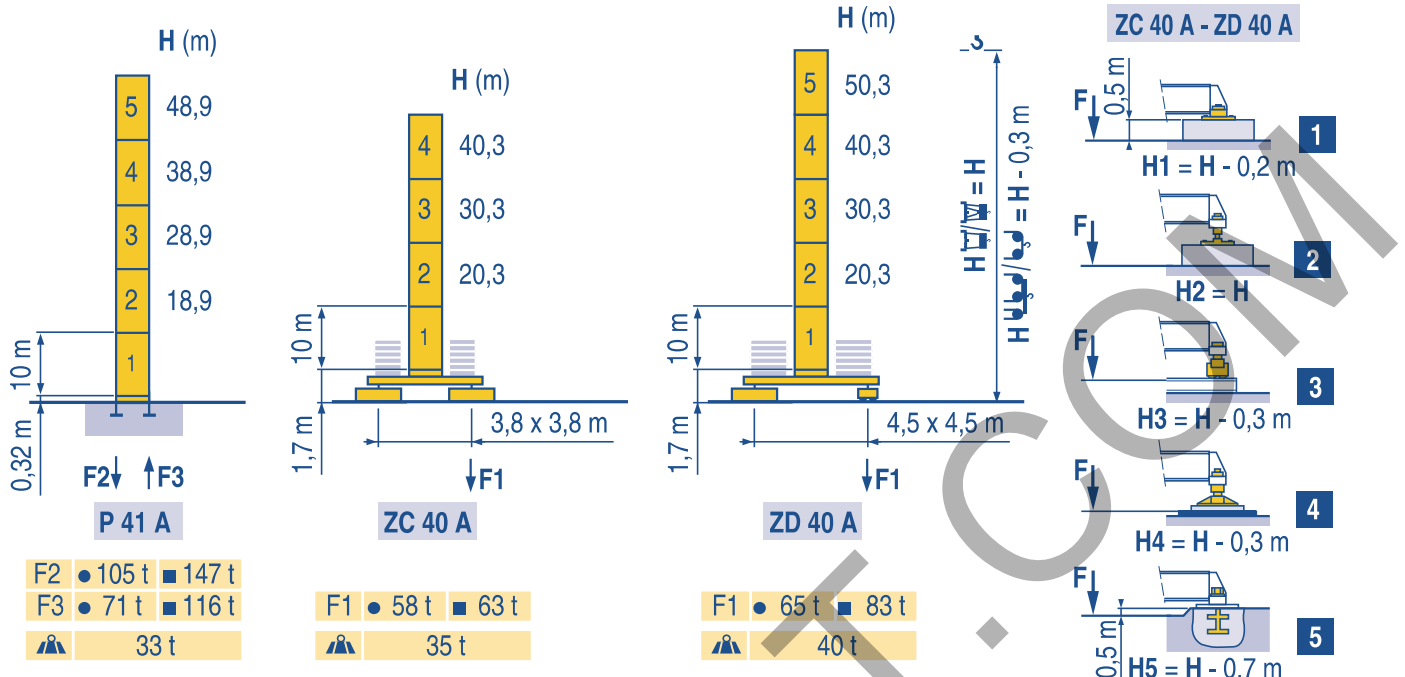


Mat / Réactions  
Maste / Eckdrücke  
City, 1,6 m

F Masts / Reactions  
D Mástil / Reacciones  
City, 1,6 m

GB Torre / Reazioni  
E 塔身 / 反力  
City, 1,6 m

I  
C



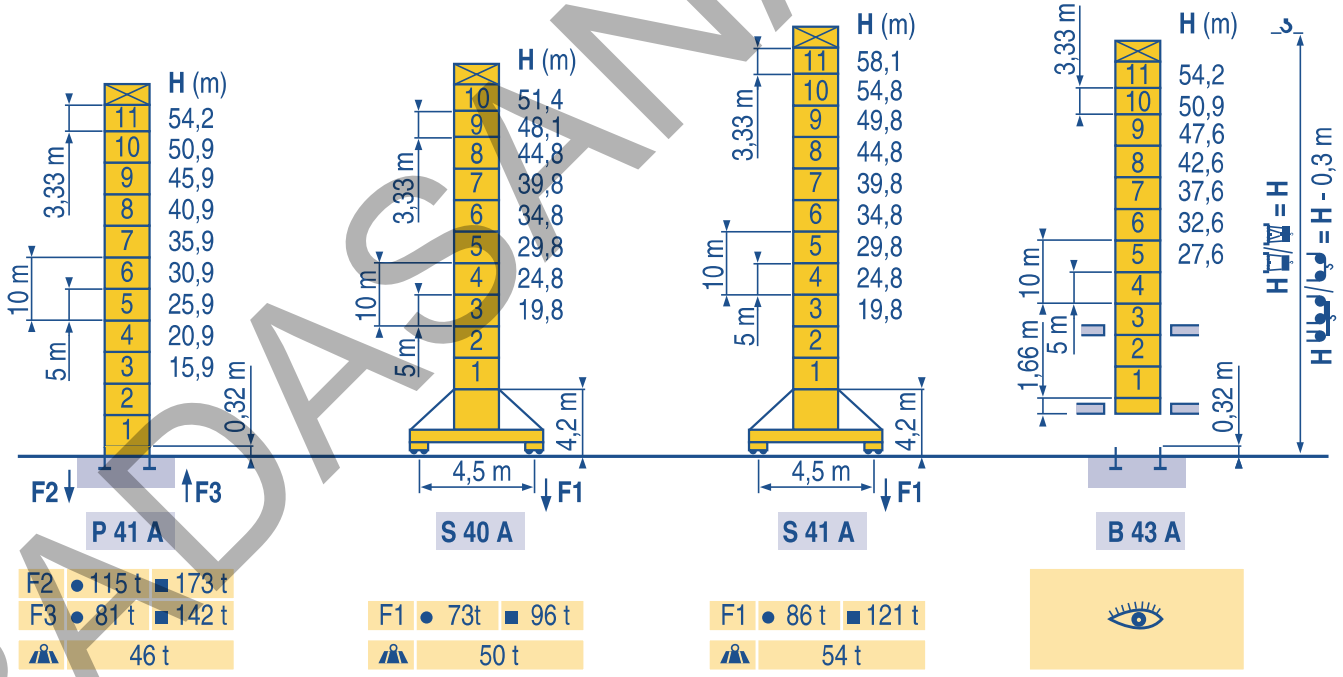
LSP 1

Télescopable 1,6 m  
Teleskopierbar 1,6 m

F Telescopico 1,6 m  
D Telescopico 1,6 m

GB Telescopico 1,6 m  
E 可顶升 1,6 m

I  
C

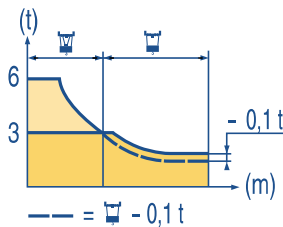
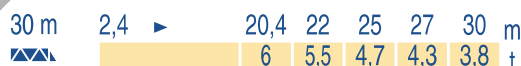
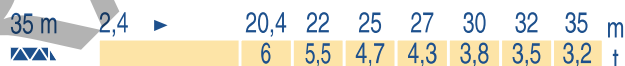
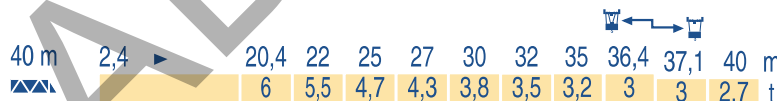
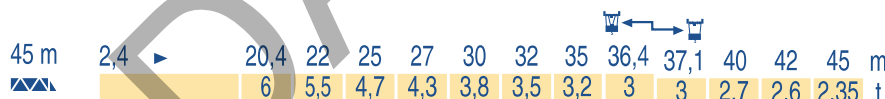
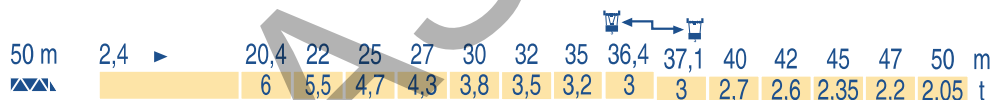
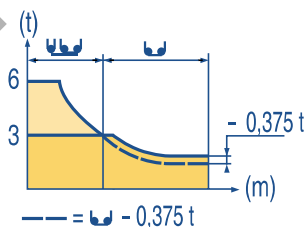
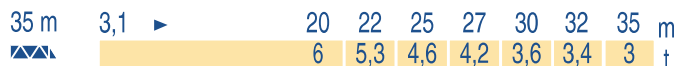
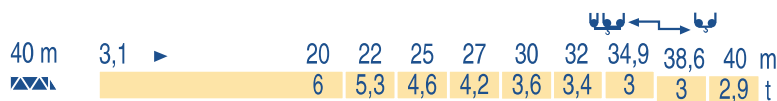
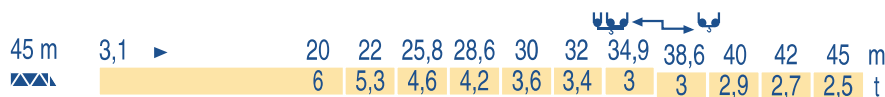
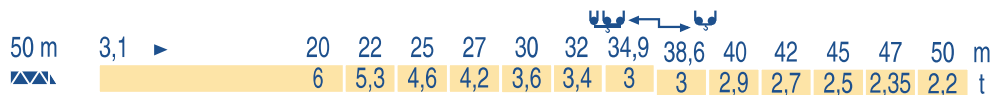
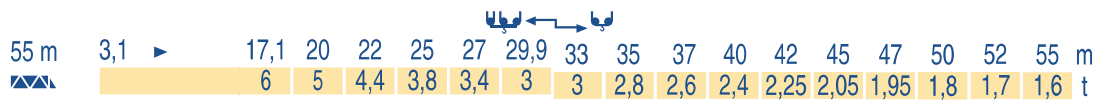
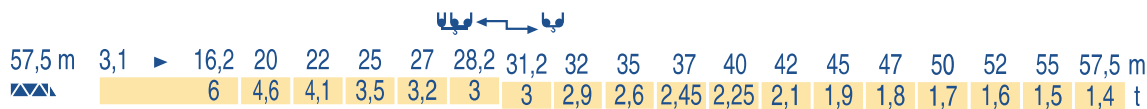


LSP 1

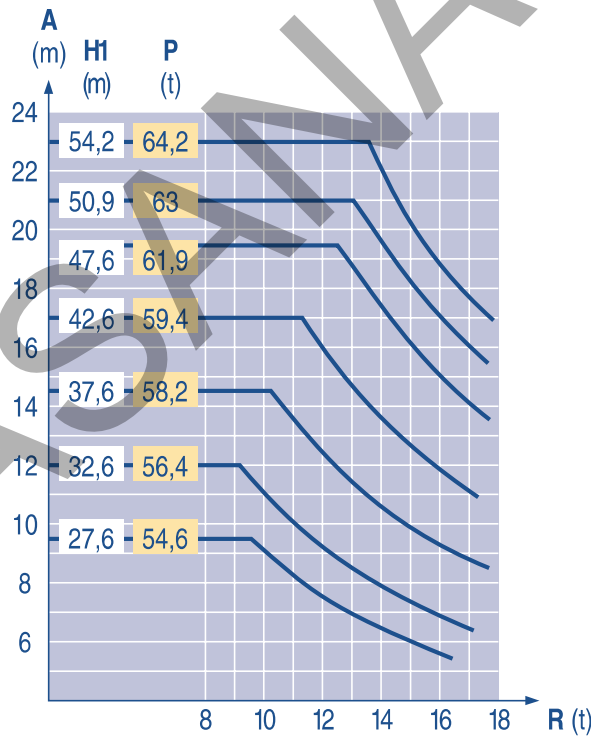
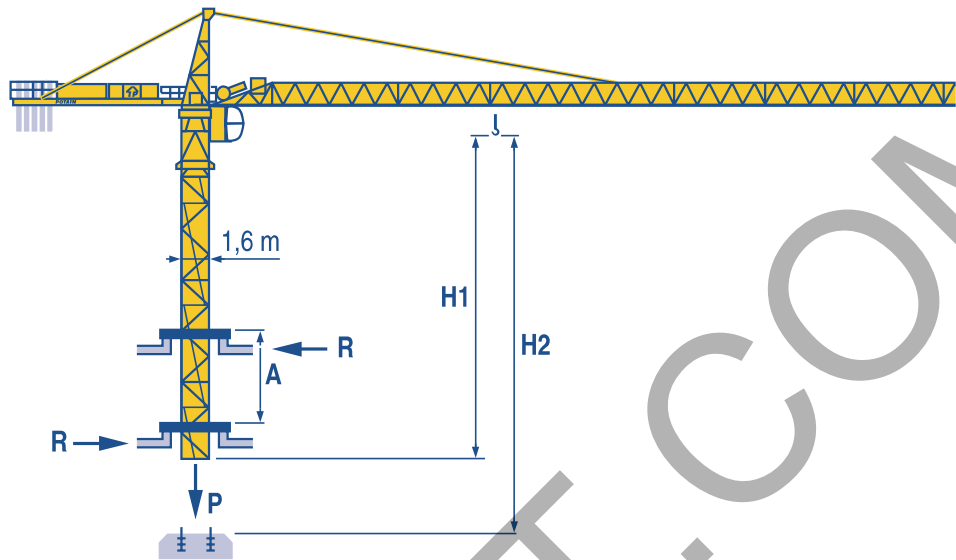
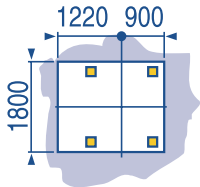
Voir télescopage sur dalles Réactions en service Réactions hors service A vide sans lest (ni train de transport) avec flèche et hauteur maximum.	<p>F</p> <p>See climbing crane Reactions in service Reactions out of service Without load, ballast (or transport axles), with maximum jib and maximum height.</p>	<p>GB</p> <p>Consultare gru in cavedio Reazioni in servizio Reazioni fuori servizio A vuoto, senza zavorra (ne assali di trasporto) con braccio massimo e altezza massima.</p>	<p>I C</p>
Siehe kletterkrane im gebäude Reaktionskräfte in Betrieb Reaktionskräfte außer Betrieb Ohne Last, Ballast (und Transportachse), mit maximaler flèche und maximalhöhe.	<p>D</p> <p>Vea grua trepadora Reacciones en servicio Reacciones fuera de servicio Sin carga, sin lastre, (ni tren de transporte) flèche y altura máxima.</p>	<p>E</p> <p>見楼板顶升 工作状态下的反应 非工作状态下的反应 空载无压重也无运输车 有吊臂和最大高度</p>	<p>C</p>

RADASANAT.COM

(0098) 9121834995



LSP 1



LSP1

A Distance entre cadres  
H1 Hauteur grue  
P Poids de la grue (en service)  
R Réaction horizontale

F Distance between collars  
Crane height  
Crane weight (in service)  
Horizontal reaction

GB Distanza fra i telai  
Altezza gru  
Peso della gru (in servizio)  
Reazione orizzontale

I

A Abstand zwischen den Rahmen  
H1 Kranhöhe  
P Krangewicht (in Betrieb)  
R Horizontalkräfte

D Distancia entra marcos  
Altura grúa  
Peso de la grúa (en servicio)  
Reaccion horizontal

E 各附着框之间距离  
工作状态下降机高度  
工作状态下降机重量  
水平反力

C

Lest de contre-flèche  
Gegenauslegerballast



Counter-jib ballast  
Lastre de contra flecha

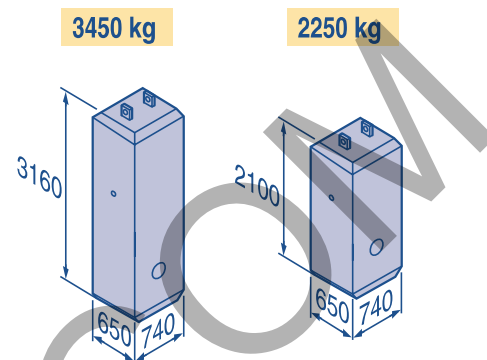


Contrappeso  
平衡臂重



		3450 kg	2250 kg	(kg)
57,5 m	14,3 m	5	-	17 250
55 m	14,3 m	4	1	16 050
50 m	13 m	4	1	16 050
45 m	13 m	3	2	14 850
40 m	13 m	4	-	13 800
35 m	13 m	3	1	12 600
30 m	13 m	2	2	11 400

LSP 1



Lest de base  
Grundballast



Base ballast  
Lastre de base



Zavorra di base  
压重



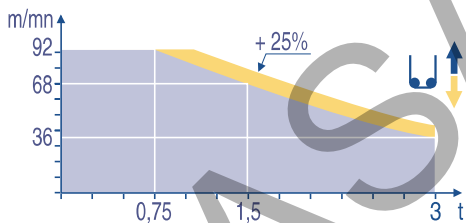
□1,6 m	ZC 40 A - ● -	H (m)	40,3	30,3	20,3						
		(t)	65	60	55						
□1,6 m	ZD 40 A - ● -	H (m)	50,3	40,3	30,3	20,3					
		(t)	70	55	45	45					
□1,6 m	S 40 A - ● -	H (m)	51,4	48,1	44,8	39,8	34,8	29,8	24,8	19,8	
		(t)	84	72	54	36	36	36	36	36	
□1,6 m	S 41 A - ● -	H (m)	58,1	54,8	49,8	44,8	39,8	34,8	29,8	24,8	19,8
		(t)	114	102	78	54	36	36	36	36	36

LSP 1

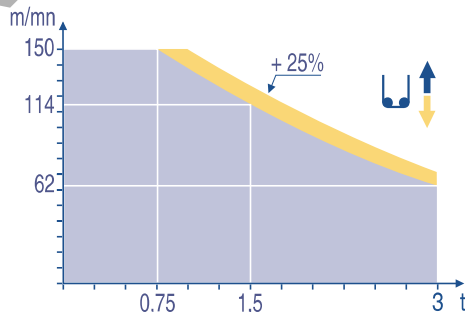
		↕ ↑			↕ ↕ ↑			ch - PS hp	kW	🔊	
↕	25 PC 15	m/min	6	30	60	3	15	30	25	18,4	260 m
		t	3	3	1,5	6	6	3			
	33 PC 15	m/min	6	37,5	75	3	19	37,5	33	24	260 m
		t	3	3	1,5	6	6	3			
↕	33 LVF 15 Optima	m/min	3 → 12 → 36 → 48 → 68 → 92	1,5 → 6 → 18 → 24 → 34 → 46			30	22	260 m		
		t	3 3 3 2,25 1,5 0,75	6 6 6 4,5 3 1,5							
↕	50 LVF 15 Optima	m/min	5 → 20 → 62 → 80 → 114 → 150	2,5 → 10 → 31 → 40 → 57 → 75			50	37	398 m		
		t	3 3 3 2,25 1,5 0,75	6 6 6 4,5 3 1,5							
↔	4 D3 V3	m/min	15 - 30 - 58						4	3	
🌀	RCV 145	tr/min U/min rpm	0 → 0,8						2 x 6	2 x 4,4	
ZC 40 A ZD 40 A ↔	RT 224	m/min	25						2 x 4	2 x 2,9	
S 40 A ↔	RT 324 R ≥ 10 m	m/min	12,5 - 25						2 x 7	2 x 5,2	
S 41 A ↔	RT 443 A1 2V R ≥ 10 m	m/min	15 - 30						4 x 5	4 x 3,7	

CEI 38	IEC 38	kVA	🔊
400 V (+6% -10%) 50 Hz		25 PC : 40 kVA 33 PC : 50 kVA 33 LVF : 50 kVA 50 LVF : 65 kVA	84/534 - 87/405

33 LVF 15  
Optima



50 LVF 15  
Optima



LSP 1

↕  
↔  
🌀  
↕  
🔊  
Levage  
Distribution  
Orientation  
Translation  
Conforme aux directives CEE 84/534 et 87/405 sur le niveau acoustique

F  
Hoisting  
Trolleying  
Slewing  
Travelling  
In compliance with the EEC 84/534 and 87/405 Instructions on noise level

GB  
Sollevamento  
Distribuzione  
Rotazione  
Traslazione  
Conforme alle direttive CEE 84/534 e 87/405 sul livello acustico

I

↕  
↔  
🌀  
↕  
🔊  
Heben  
Katzfahren  
Schwenken  
Kranfahren  
Gemäss EWG-Richtlinien 84/534 und 87/405 für den Schall-Leistungspegel

D  
Elevación  
Distribución  
Orientación  
Traslación  
Conforme con las directivas CEE 84/534 y 87/405 sobre el nivel acustico

E  
起升  
变幅  
回转  
行走  
符合 CEE 84/534 - CEE 87/405 声响应度规定

C

修改权在我方  
Modifiche riservate  
Modificaciones reservadas  
Subject to modification  
Änderungen vorbehalten  
Modifications réservées  
Printed in France



CITY CRANE MD 125 B

Copyright, Reproduction interdite © POTAIN 2000

18, Rue de Charbonnières, B.P. 173  
F-69132 ECULLY Cedex  
Tél. (33)04.72.18.20.20  
Fax (33)04.72.18.20.00  
http://www.potain.com  
E-mail : mkt@potain.fr

Deutschland  
POTAIN GmbH Tel : 06.105.704.0  
Italia  
POTAIN S.p.A. Tel : 0.331.49.33.11  
Singapore  
POTAIN PTE LTD Tel : (00.65) 227.1550

Courtesy of Crane.Market