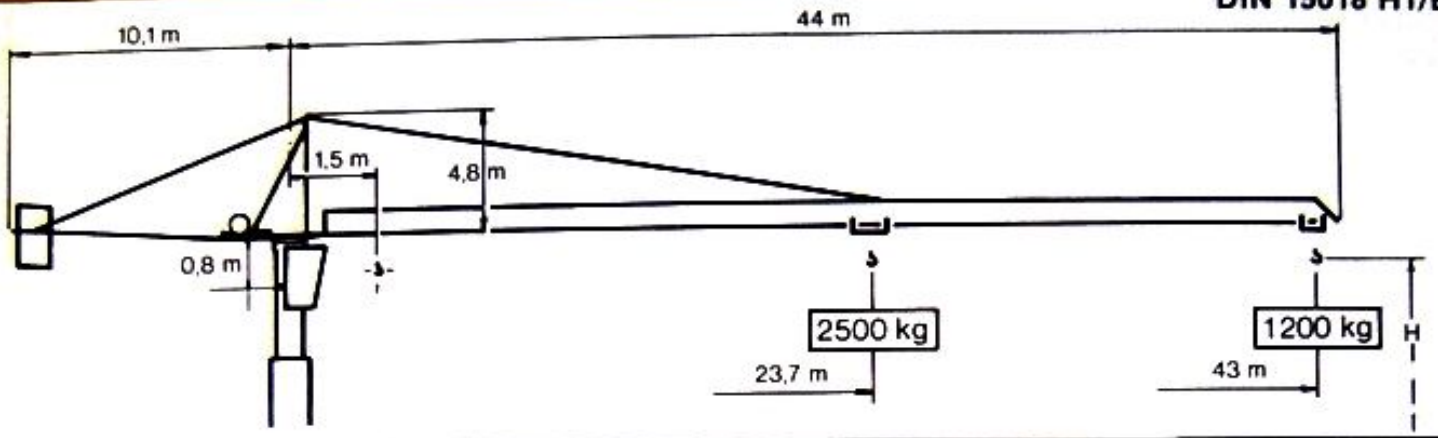


DIN 15018 H1/B3



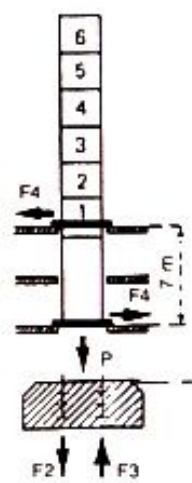
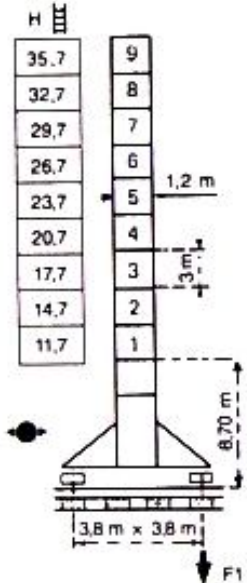
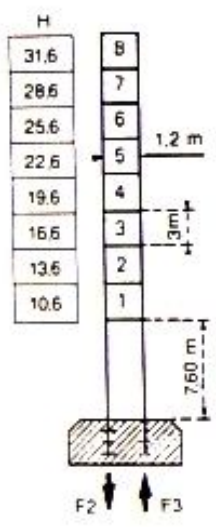
Mástil  
 1,2 m x 1,2 m

$H = 1 + 8 + 1 = 31,6$

$H = 1 + 9 + 1 = 35,7$

$H = 1 + 6 + 1 = 26$

F = Reacciones



F2	● 59 t	■ 71 t
F3	● 44 t	■ 58 t
	18 t	
F1	● 40 t	■ 50 t
	25 t	

$H > M$  máxi: Consultarnos

- En servicio
- Fuera de servicio

Sin cargas, sin lastre con flecha y altura máxima.

### Curvas de cargas

FLECHA  
43 m

25	235	214	2	181	168	156	145	136	127	12	t
23.7	25	27	29	31	33	35	37	39	41	43	m

FLECHA  
41 m

25	225	207	191	177	165	153	144	135	t
24.8	27	29	31	33	35	37	39	41	m

FLECHA  
36 m




25	24	221	204	180	176	17	t
26	27	29	31	33	35	36	m

FLECHA  
31 m

25	227	21	t
26.8	29	31	m

FLECHA

# MECANISMOS

	Velocidades	t	m/min.	Capacidad
Elevación  T155 - 12,5 11 IW - 15 ch		0 - 2,5	5	260 m
		0 - 2,5	21	
		0 - 1,25	42	
Carro Standard DT 125 ▶ 1,84 kW - 2,5 ch Opcional DC 2V 30 ▶ 0,7/2,2 kW - 1/3 ch			35  14 - 42	
Orientación  RCE 160 ▶ 4,5 kW - 6 ch			0 → 1 g/min. l/min.  Rpm - Upm	
Traslación ▶ R3 TB 260 - C ▶ 2 x 2,2 kW - 2 x 3 ch ▶ R3 TB 350 - C ▶ 2 x 3 kW - 2 x 4 ch		25		
Potencia eléctrica necesaria	380 V 50 Hz	25 KVA		