

---

**TOPKIT G20/15C**

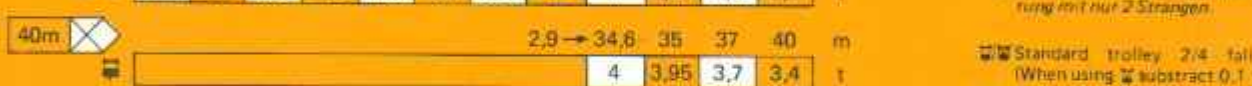
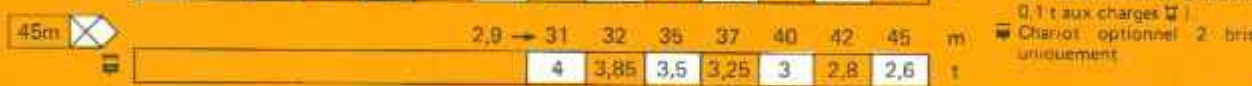
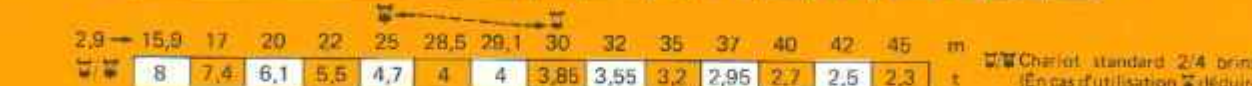
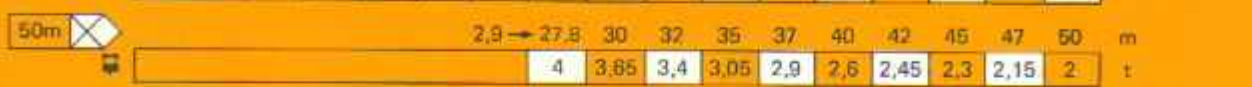
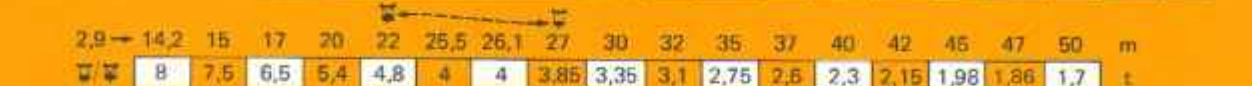
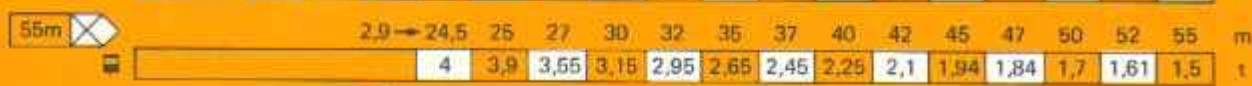
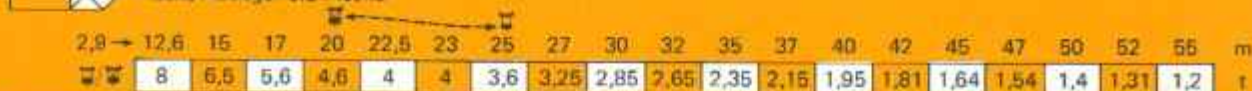
---

**POTAIN** 



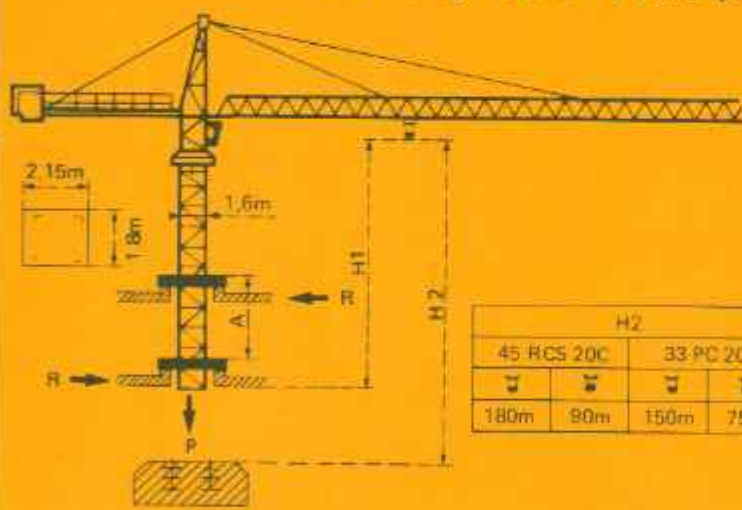
# Courbes de charges Lastkurven Load diagrams Curvas de cargas

Flèche Ausleger Jib Flecha

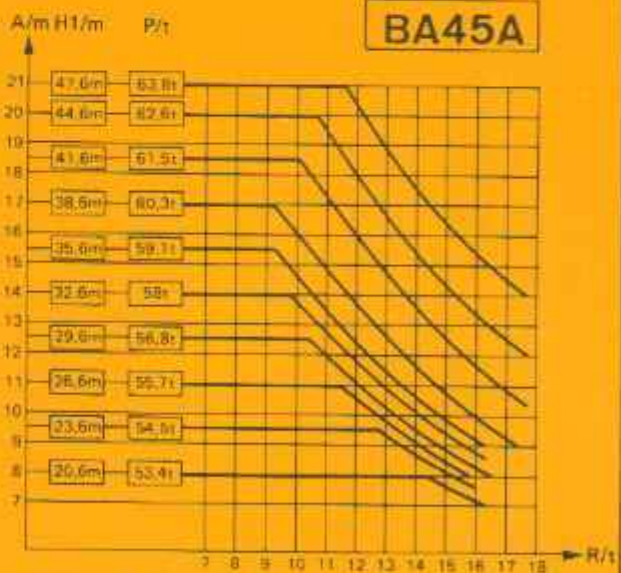


- ☐ Chariot standard 2/4 brins. (En cas d'utilisation ☐ déduire 0.1 t aux charges ☐.)
- ☐ Chariot optionnel 2 brins uniquement
- ☐ Standardlaufkatze 2/4 Stränge. (Bei Einsatz von ☐ ist 0.1 t der Lasten von ☐ abzuziehen.)
- ☐ Laufkatze in Sonderausführung mit nur 2 Strängen.
- ☐ Standard trolley 2/4 fall. (When using ☐ subtract 0.1 t from the loads ☐.)
- ☐ Optional trolley 2 fall only.
- ☐ Carro standard 2/4 ramales. (En caso de utilización ☐ quitar 0.1 t de las cargas ☐.)
- ☐ Carro opcional en 2 ramales solamente.

## Télescopage sur dalles - Ketterkrane im Gebäude Climbing crane - Telecopage gruas trepadoras




























H2			
45 RCS 20C	33 PC 20C		
☐	☐	☐	☐
180m	90m	150m	75m



- A Distance entre cadres A Abstand zwischen den Rahmen A Distance between collars A Distancia entre marcos
- H1 Hauteur grue H1 Kranhöhe H1 Crane height H1 Altura grúa
- P Poids de la grue (En service) P Krangewicht (In Betrieb) P Crane weight (In service) P Peso de la grúa (En servicio)
- R Réaction horizontale R Horizontalkräfte R Horizontal reaction R Reacción horizontal

- En service ● In Betrieb ● In service ● En servicio
- Hors service ■ Ausser Betrieb ■ Out of service ■ Fuera de servicio
- ☐ A vide sans lest avec flèche et hauteur maximum. ☐ Ohne Last und Ballast mit Maximalausleger und Maximalhöhe. ☐ Without load and ballast with longest jib and maximum height. ☐ Sin cargas, sin lastre con flecha y altura máxima.

Mécanismes *Antriebe* Mechanisms *Mecanismos*

				m/min	t		ch-PS hp	kW	
Levage Heben Hoisting Elevación	45 RCS 20 C 	 		0 → 40	4	361 m > 361 m	45	33	
				0 → 80	2				
		 		0 → 20	8				
				0 → 40	4				
	33 PC 20 C 	 		5,4	4	299 m > 299 m	33	24	
				30	4				
				60	2				
		 		2,7	8				
			15	8					
			30	4					
Distribution - <i>Katzfahren</i> Trolleying - <i>Distribución</i>		6 DPC 4	7,5 30 60				6	4,4	
Orientation - <i>Schwenken</i> Slewing - <i>Orientación</i>		OMD	0 → 0,7 r/min U/min-rpm				8	5,9	
Translation Kranfahren Travelling Traslación	SB 459  R ≥ 10m	RT 324	12,5-25				2 x 7	2 x 5,2	
	RC 446 ARC H ≤ 33,6 m	10 - 50					4 x 6,8	4 x 5	
	VB 663  R ≥ 13m	RT 443 A1 2V	15 - 30					4 x 5	4 x 3,7
	RC 646 ARC H ≤ 43,9 m	10 - 50						4 x 6,8	4 x 5
Réseau - <i>Netzstrom</i> - Mains supply - <i>Red</i>							380V - 50 HZ		
Puissance électrique nécessaire - <i>Anschlusswert</i> - Necessary electric power - <i>Potencia eléctrica necesaria</i>							RCS : 70 kVA PC : 50KVA		
Groupe électrogène - <i>Stromaggregat</i> - Generator set - <i>Grupo electrogeno</i>							.		

\*Nous consulter - *Auf Anfrage* - Consult us - *Consultarnos*

NF E52081 - 82

**POTAIN** 

18, rue de Charbonnières B.P. 173 - F 69132 ECULLY Cedex  
Tél. (7) 833.81.81 - Télex 330 179 F

POTAIN GmbH - D 6082 MÖRFELDEN WALLDORF  
Nordendstr. 79-87 - Postfach 420 - Tel. 06105 704.0 - Telex 4.185745  
POTAIN SUISSE S.A. - CH 5115 MÖRIKEN WILDEGG  
Tel. 64.53.19.91 - Telex 981406

**TOPKIT G20/15C**

Ref. 8513 KNJ 1

Modifications réservées - *Änderungen vorbehalten* - Subject to modification - *Modificaciones reservadas*

Printed in France